

# PHILIPS

## Hairdryer

### SalonDry Control

2200W

Europe's  
**No.1**  
Hairdryer Brand  
2006-2011\*

\*Based on independent 2011  
cumulated volume sales data for  
17 European countries

HP8183/00



## Dry, Style and Set your hair your way SalonDry Control Hair Dryer

Take control of your blow dryer with the SalonDry Control. 2200W of professional drying power, 4 times more Ionic conditioning and multiple settings means great and shiny results - from dry to set to style.

### Beautifully styled hair

- Professional 2200W for perfect salon results
- Six flexible speed and temperature settings for full control
- Cool Shot sets your style
- Narrow concentrator for focused airflow
- Volume diffuser enhances volume, for curls and bouncy styles

### Less Hair Damage

- Ceramic element to smooth your hair
- 4 x stronger Ion conditioning for ultimate shine

### Easy to use

- Removable air inlet grill for easy cleaning
- Easy storage hook for convenient storage
- 1.8 m power cord

# Highlights

## Professional 2200W



This 2200W professional hairdryer creates a powerful airflow. The resulting combination of power and speed makes drying and styling your hair quicker and easier.

## Ion conditioning 4 x more



Give your hair an intensive boost with ionic conditioning. This hairdryer emits 4 x more negatively charged ions than other hairdryers. This ultimate stream of ions eliminates more static, conditions the hair and smooths down the hair cuticles. The result is ultimate shiny, frizz-free hair. Let it shine!

## Six flexible speed and temperature settings



The speed and heat required can be easily adjusted to create the perfect style. Six different settings ensure full control for precise and tailored styling.

## Ceramic element



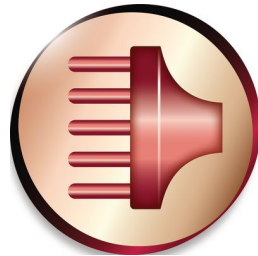
The ceramic element is included to prevent overdrying. It issues infrared heat, which has a gentle warmth which helps dry your hair from within and protects it from overdrying, without compromising on speed and effectiveness.

## Cool Shot



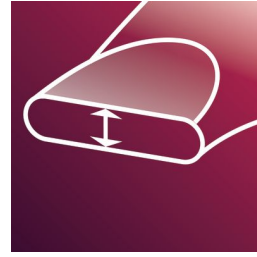
A must-have professional function for hair stylists. The Cool Shot button provides an intense burst of cold air. It is used after styling to finish and set the style.

## Volume diffuser



The volume diffuser dries hair healthily, reduces frizz and increases volume by spreading the airflow across the hair. It adds lift and maximises volume, especially when used on the crown and root area, making it perfect for creating curls and bouncy styles.

## Narrow concentrator



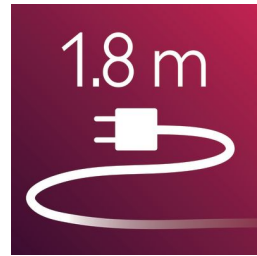
The concentrator of the hair dryer works by focusing the flow of air through the opening onto specific areas. This results in precise styling and is great for touch ups or to finish a hair style.

## Easy storage hook



The rubberised hook is located at the base of the handle and provides another storage option, particularly convenient for use in the home or when staying at a hotel.

## 1.8 m cord



1.8 m power cord

# Specifications

## Technical specifications

Wattage: 2200 W

Cord length: 1.8 m

Wattage(Taiwan): 1500 W

## Features

Cool shot

Ion conditioning

Hanging loop

## Service

2-year guarantee

