

PHILIPS

Wet and dry electric shaver

Shaver series 9000

V-Track blade system PRO

8-direction
ContourDetectHeads

SmartClick precision trimmer



S9211/12



Perfection in every pass

Philips' no.1 on 1-3 day beards

The Shaver 9000 is our most advanced shaver yet. The unique contour detect technology offers exceptional coverage over every contour of your face, and the V-Track system guides hairs into the best cutting position for the closest results.

Designed for perfection

- Our best shaving system on 1-3 day beard
- Heads flex in 8 different directions for a superb result

A comfortable shave

- Get a comfortable dry or refreshing wet shave with Aquatec

Get the most of your shaver

- Click-on trimmer for perfect mustache and sideburn trimming

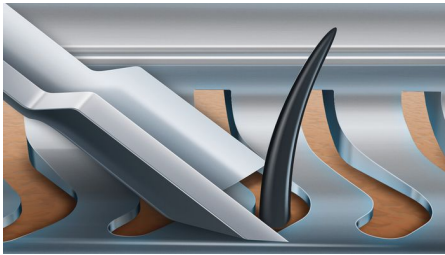
Easy to use

- Intuitive icons make the functions easy to use
- 50 minutes cordless shaving after a one-hour charge
- Shaver can be rinsed clean under the tap
- With 2 year guarantee



Highlights

V-Track blade system PRO



Get the perfect close shave. The V-Track Precision PRO Blades gently position each hair in the best cutting position, from 1 day up to 3 day beard and even the flat laying and different length of hairs. Cuts 30% closer* in less strokes leaving your skin in great condition.

8-direction ContourDetectHeads



Follow every contour of your face and neck with 8-directional ContourDetect heads. You'll catch 20% more hairs with every pass. Resulting in an extremely close, smooth shave.

Aquatec Wet & Dry



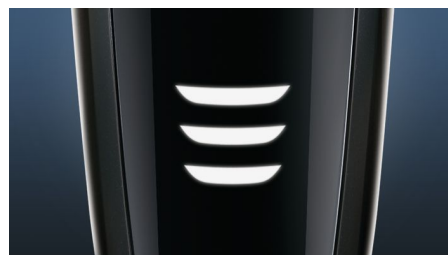
Choose how you prefer to shave. With the Aquatec Wet & Dry seal, you can opt for a quick yet comfortable dry shave. Or you can shave wet – with gel or foam – even under the shower.

SmartClick precision trimmer



Click on our skin-friendly Precision Trimmer to finish your look. It's ideal for maintaining your mustache and trimming your sideburns.

3 level LED display



The intuitive display shows relevant information, enabling you to get the best performance out of your shaver: - 3-level battery and travel lock indicators - Cleaning Indicator - Battery Low Indicator - Replacement Head Indicator

50 minutes of cordless shaving



Our advanced charging system gives you two convenient options: charge for one hour and you'll get 50 minutes of running time, or do a quick charge for one full shave. All 9000 Series Shavers contain a powerful energy-efficient, long-lasting lithium-ion battery. They are designed to operate only in cordless mode, to ensure you'll always be safe when shaving with water, even under the shower.

Fully washable shaver



Simply open the shaver head to rinse it thoroughly under the tap.

Built to last



We back this Philips shaver with a 2-year guarantee. Our 9000 Series Shavers are designed for performance and durability, promising you an extremely close shave time after time.



iF DESIGN AWARD 2015

Shaver series 9000iF DESIGN AWARD 2015



asimpleswitch.com

Philips Green Logo

Philips Green Products can reduce costs, energy consumption and CO2 emissions. How? They offer a significant environmental improvement in one or more of the Philips Green Focal Areas – Energy efficiency, Packaging, Hazardous substances, Weight, Recycling and disposal and Lifetime reliability.

Specifications

Shaving Performance

Shaving system: V-Track blade system PRO

Contour following: 8-direction

ContourDetectHeads

SkinComfort: AquaTec Wet & Dry

Accessories

SmartClick: Precision trimmer

Pouch: Travel pouch

Power

Battery Type: Lithium-ion

Run time: 50 min / 17 shaves

Charging: 1 hour full charge, Quick charge for 1

shave

Automatic voltage: 100–240 V

Stand-by power: 0.1 W

Max power consumption: 9 W

Ease of use

Display: 3 level battery indicator, Battery low indicator, Cleaning indicator, Replace shaving heads indicator, Travel lock indicator

Cleaning: Fully washable

Design

Color: Ceres

Handle: Ergonomic grip & handling

Service

2-year guarantee

Replacement head: Replace every 2 yrs with SH90

Software

Software update: Philips offers relevant software updates for a period of 2 years after the date of purchase

