

PHILIPS

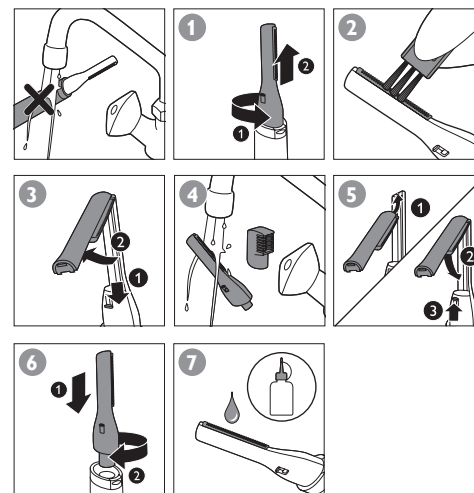
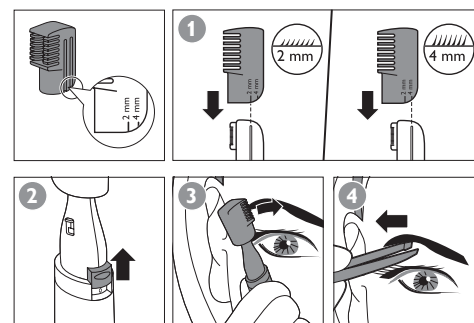
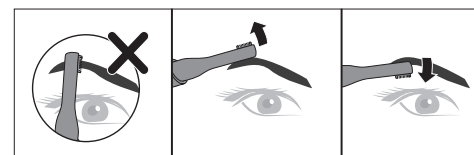
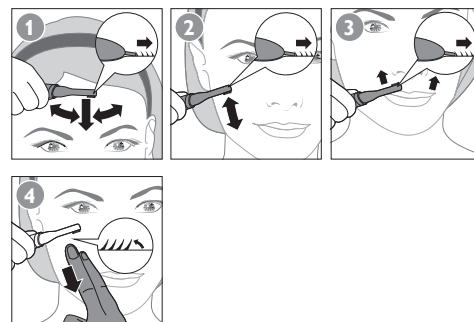
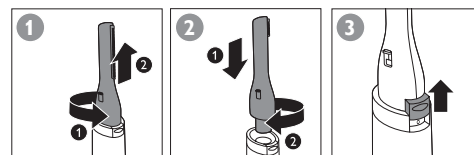
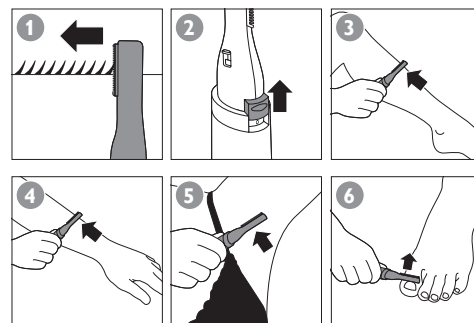
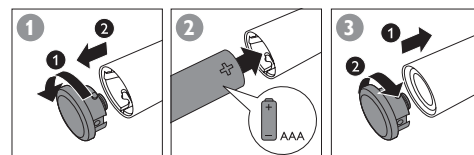
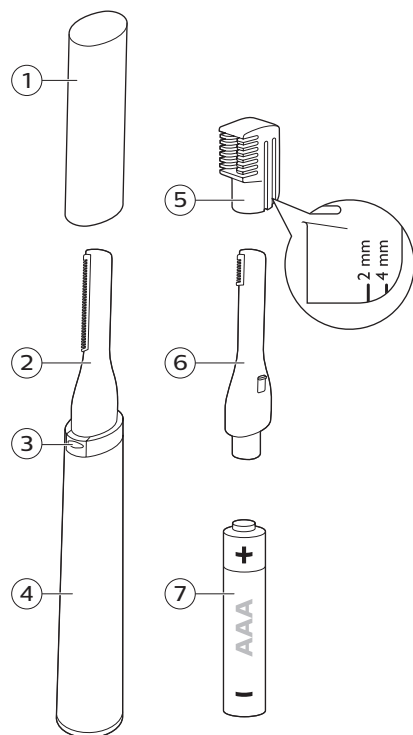
HP6389



© 2017 Koninklijke Philips N.V.
All rights reserved
保留所有权利
4222.003.0227.1
(29/01/2018)

 >75% 循环再造纸
>75% recycled paper

1



ENGLISH

Introduction

Congratulations on your purchase and welcome to Philips! To fully benefit from the support that Philips offers, register your product at www.philips.com/welcome.

General description (Fig. 1)

- 1 Protection cap
 - 2 Trimming head (26mm)
 - 3 On/off switch
 - 4 Battery compartment
 - 5 Eyebrow comb
 - 6 Trimming head (8mm)
 - 7 1.5V AAA alkaline battery
- Not shown: Cleaning brush

Important safety information

Read this important information carefully before you use the appliance and its accessories and save it for future reference. The accessories supplied may vary for different products.

Warning

- This appliance can be used by children aged from 8 years and above and persons with reduced physical, sensory or mental capabilities or lack of experience and knowledge if they have been given supervision or instruction concerning use of the appliance in a safe way and understand the hazards involved. Children shall not play with the appliance. Cleaning and user maintenance shall not be made by children without supervision.
- Always check the appliance before you use it. Do not use the appliance if it is damaged, as this may cause injury. Always replace a damaged part with one of the original type.

Caution

- This appliance is not washable. Never immerse the appliance in water and do not rinse it under the tap (Fig. 2).
- Only use this appliance for its intended purpose as shown in the user manual.
- Use and store the appliance at a temperature between 15°C and 35°C.
- For hygienic reasons, the appliance should only be used by one person.
- Do not expose the appliance to direct sunlight.
- Only operate the appliance on 1.5V AAA alkaline batteries.
- Make sure that your hands and the appliance are dry when you insert batteries.
- Do not mix different types of batteries or new and used batteries.
- Do not recharge non-rechargeable batteries.
- Insert batteries with the + and - poles pointing in the right direction.
- Do not short-circuit the supply terminals of batteries.

- Remove batteries from the appliance if you are not going to use it for some time.
- Never use compressed air, scouring pads, abrasive cleaning agents or aggressive liquids to clean the appliance.

Electromagnetic fields (EMF)

This Philips appliance complies with all applicable standards and regulations regarding exposure to electromagnetic fields.

Recycling

- Do not throw away the product with the normal household waste at the end of its life, but hand it in at an official collection point for recycling. By doing this, you help to preserve the environment.
- This product contains disposable batteries which shall not be disposed of with normal household waste.
- Follow your country's rules for the separate collection of electrical and electronic products and batteries. Correct disposal helps prevent negative consequences for the environment and human health.

Removing disposable batteries

To remove disposable batteries, see the instructions for placing and/or removing batteries in the user manual.

Always remove empty disposable batteries from the product. Take any necessary safety precautions when you dispose of batteries.

Ordering accessories

To buy accessories or spare parts, visit **www.shop.philips.com/service** or go to your Philips dealer. You can also contact the Philips Consumer Care Center in your country (see the international warranty leaflet for contact details).

Warranty and support

If you need information or support, please visit **www.philips.com/support** or read the international warranty leaflet.

Warranty restrictions

Cutting units are not covered by the terms of the international warranty because they are subject to wear.

Troubleshooting

This chapter summarizes the most common problems you could encounter with the appliance. If you are unable to solve the problem with the information below, visit **www.philips.com/support** for a list of frequently asked questions or contact the Consumer Care Center in your country.

Problem	Possible cause	Solution
The appliance does not work as well as it should.	Hairs may be stuck in the trimming head or comb.	Clean the appliance.
The appliance pulls on the hairs.	You are moving the appliance too fast.	Do not move the appliance too fast.
	The disposable battery is empty.	Insert a new battery.
The appliance works, but the result is uneven.	You are pressing the appliance onto the skin too hard.	Do not press the appliance onto the skin too hard, as this may cause the hair length after trimming to be shorter than the indicated hair lengths.
	The comb is not in full contact with the skin.	Make sure that the comb is fully in contact with the skin.
	You are not moving the appliance in the right direction.	Always move the appliance against the direction of hair growth. As not all hairs grow in the same direction, this means that you have to move the appliance upwards, downwards and sideways.
The appliance does not work.	The disposable battery is empty or has been inserted incorrectly.	Replace the battery or insert it correctly.

简体中文

简介

感谢您的惠顾，欢迎光临飞利浦！为了让您能充分享受飞利浦提供的支持，请在 **www.philips.com/welcome** 上注册您的产品。

基本说明（图 1）

- 1 保护盖
 - 2 修剪刀头（26 毫米）
 - 3 开/关按钮
 - 4 电池仓
 - 5 眉梳
 - 6 修剪刀头（8 毫米）
 - 7 1.5V AAA 碱性电池
- 未显示: 清洁刷

重要安全信息

使用本产品及其附件之前，请仔细阅读本重要信息，并妥善保管以供日后参考。随附的附件可能因产品而异。

警告

- 本产品也可以由 8 岁或以上年龄的儿童以及肢体不健全、感觉或精神上有障碍或缺乏相关经验和知识的人士使用，但前提是有人对他们使用本产品进行监督或指导，以确保他们安全使用，并且让他们明白相关的危害。切勿让儿童玩弄本产品。不要让儿童在无人监督的情况下对本产品进行清洁和保养。
- 使用前，请务必检查产品。请勿使用损坏的产品，否则可能对人体造成伤害。请务必用原装型号更换损坏的部件。

警告

- 本产品不可水洗。切勿将本产品浸入水中，也不要在水龙头下冲洗 (图 2)。
- 警告符号注释：禁止在打开的水龙头下进行清洗 (图 2)。
- 只能将本产品用于用户手册中所示的原定用途。
- 必须在 15 摄氏度至 35 摄氏度之间的温度下使用和存放本产品。
- 出于卫生的目的，本产品只能供一个人使用。
- 切勿将产品直接曝晒于阳光下。
- 仅使用 1.5 伏 AAA 碱性电池运行本产品。
- 确保您在安装电池时双手和产品都是干的。
- 请勿混用不同类型的电池或新旧电池。
- 请不要给不可充电电池充电。
- 插入电池，确保 + 和 - 极方向正确。
- 请勿使电池的输入端短路。
- 如果在一段时期内不会使用本产品，请从产品中取出电池。
- 切勿使用压缩气体、钢丝绒、研磨性清洁剂或腐蚀性液体清洁设备。

电磁场 (EMF)

本 Philips 产品符合所有有关暴露于电磁场的适用标准和法规。

回收

- 弃置本产品时，请不要将其与一般生活垃圾放在一起，应将其交给政府指定的回收中心。这样做将有利于环保。
- 此产品包含一次性电池：请勿将充电电池与一般生活垃圾一起弃置。
- 遵循您所在国家/地区有关分类回收电子电气产品和电池的规定。正确弃置产品有助于避免对环境和人类健康造成不良后果。

拆卸一次性电池

要拆卸一次性电池，请参见用户手册中关于安装和/或拆卸电池的说明。

请务必将电量耗尽的一次性电池从产品中取出。当您弃置电池时，请采取必要的安全保护措施。

订购配件

要购买附件或备件，请访问 **www.shop.philips.com/service** 或联系您的飞利浦经销商。您还可以联系所在国家/地区的飞利浦客户服务中心（请参阅全球保修卡了解详细信息）。

保修和支持

如需信息或支持，请访问 **www.philips.com/support** 或阅读国际保修卡。

保修条款

修剪部件不在国际保修条款的涵盖范围之内，因为修剪部件属于易磨损物品。

故障处理方法

本章归纳了使用本产品时最常见的一些问题。如果您无法根据以下信息解决问题，请访问 **www.philips.com/support** 查阅常见问题列表，或联系您所在国家/地区的客户服务中心。

问题	可能的原因	解决方法
产品无法正常工作。	修剪刀头或修剪梳中可能卡有毛发。	清洁产品。
产品拉拔毛发。	您移动产品的速度太快。	移动本产品时速度不要太快。
	一次性电池的电量已耗尽。	插入新电池。
产品可以工作但修剪不齐。	您将产品过于用力地按在皮肤上了。	请勿将产品过于用力地按在皮肤上，这样可能会导致修剪后的毛发长度比所指示的短。
	修剪梳未完全接触皮肤。	确保修剪梳完全紧贴皮肤。

问题	可能的原因	解决方法
	您没有朝正确的方向移动产品。	始终逆着毛发生长的方向移动产品。由于并非所有毛发都朝一个方向生长，这意味着您必须朝上下及两侧方向移动产品。

产品无法工作。	一次性电池的电量已耗尽或安装不正确。	更换电池或正确安装。
---------	--------------------	------------

PHILIPS

产品：飞利浦修眉器
型号：HP6389
额定电压：1.5V 
额定电流：150 mA
生产日期：请见产品本体
产地：中国广东中山

飞利浦（中国）投资有限公司
上海市静安区灵石路718号A1幢
全国顾客服务热线: 4008 800 008

本产品根据国标 GB4706.1-2005, GB4706.9-2008制造

保留备用
发行日期: 29/01/2018