

# PHILIPS

Epilator, Brush &  
Hair Dryer

Satinelle

Hair & Body

Beauty Care Pack



HP6542/00

## Beauty Care Pack

Give special care to your skin and hair

Pamper yourself with the special Beauty Care Pack. Includes a satin soft epilator with skin care system, a luxury exfoliation brush and the salon essential hair dryer with caring temperature setting.

### Convenient epilation

- Gentle tweezing discs remove hairs without pulling the skin
- Remove hairs as short as 0.5mm
- Two speed settings for gentle epilation and max. performance
- Washable epilation head for extra hygiene and easy cleaning

### Accessories

- Luxury Exfoliation Brush to reveal even more radiant skin
- Sensitive area cap for bikini line and underarms
- Convenient pouch for easy storage

### Beautifully styled hair

- 1500W caring drying power
- ThermoProtect temperature setting
- Integrated nozzle for more efficient drying
- Foldable handle for easy portability

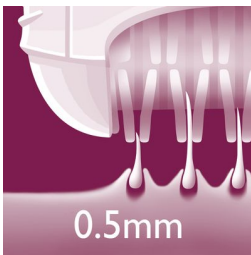
# Highlights

## Gentle tweezing discs



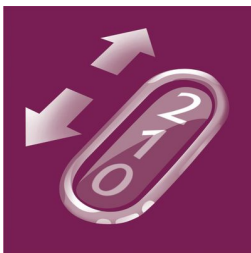
This epilator has gentle tweezing discs to remove hairs as short as 0.5mm without pulling the skin.

## Unique epilation discs



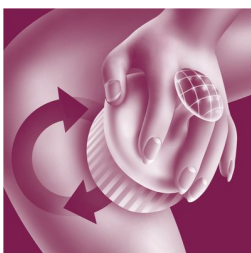
Unique epilation discs remove hairs as short as 0.5mm.

## Two speed settings



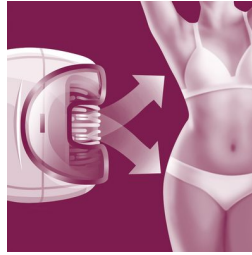
Extra speed setting for thin hairs and difficult to reach areas

## Luxury Exfoliation Brush



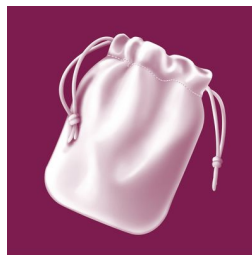
Unique Philips design which contains hypo-allergenic bristles for optimal hygiene. Fits perfectly in your hand for optimal handling in all conditions and can be used wet & dry.

## Sensitive area cap



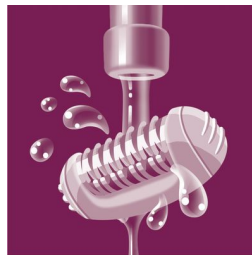
Specifically adapted for more sensitive skin. The cap covers the outer epilator discs, for a more gentle epilation in sensitive areas.

## Convenient pouch



Small pouch for easy storage.

## Washable epilation head

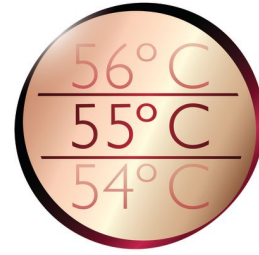


This epilator has a washable epilation head. The head can be detached and cleaned under running water for better hygiene

## 1500W caring dryer power

This 1500W hairdryer creates the optimum level of airflow and gentle drying power, for beautiful results, every day.

## ThermoProtect temperature



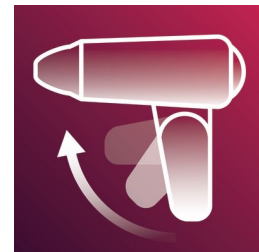
The ThermoProtect temperature provides the optimal drying temperature and gives additional protection from overheating the hair. With the same powerful airflow, you will get the best results in a caring way.

## Efficient integrated nozzle



Unique dryer, where the nozzle is integrated into the streamlined design - for maximum drying efficiency.

## Foldable handle



This hairdryer benefits from a foldable handle. The result is a small, compact hair dryer that will easily pack into the smallest spaces and you can take virtually anywhere.

# Specifications

## Features

**Hair Dryer:** 2-year guarantee, Cool shot, Foldable handle, Hanging loop, Swivel cord

**Epilator:** Gentle tweezing discs, Unique epilation discs, 2 speed settings, Corded use, Washable epilation head, 2 year guarantee

## Accessories

**Epilator:** Exfoliation Brush, Sensitive area cap, Convenient pouch

## Technical Data (Epilator)

**Number of catching points:** 20

**Number of discs:** 21

**Pulling actions/sec. speed 1:** 666

**Pulling actions/sec. speed 2:** 733

**Voltage adapter:** 13V / 400mA

**Voltage device:** 3.6V

## Technical Data (Hair Dryer)

**Color / finishing:** White-Peach

**Cord length:** 1.5m

**Wattage:** 1500 W

