

PHILIPS

Tourmaline infused
plates straightener

StraightCare

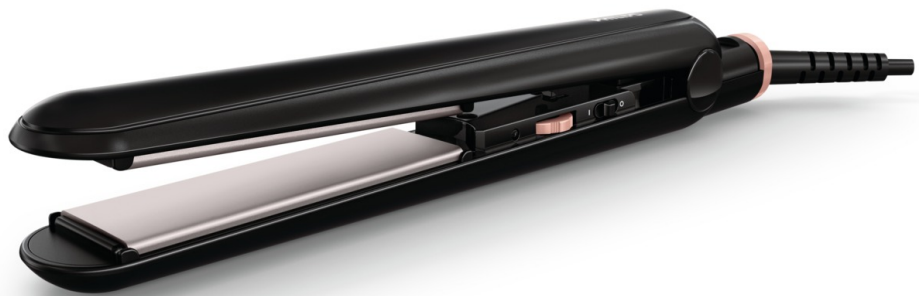
Tourmaline coating

220°C styling temperature

6 heat settings



HP8324/20



Ultimate smoothness and shine

Straightener with tourmaline infused plates

This straightener has the smoothest plates, so it reduces significantly frictions, avoids hair breakage and leaves your hair with healthy smoothness and shine.

Beautifully styled hair

- Tourmaline coating for smoothness and shine
- Up to 220°C styling temperature for perfect results

Less hair damage

- 6 temperature settings for control

Ease of use

- Fast heat up time, ready to use in 60 seconds
- Closing lock to close the handle for easy and safe storage
- 1.8 m power cord
- Swivel cord to prevent tangled wires
- Universal voltage
- 2 years of worldwide guarantee

Highlights

Tourmaline coating



The smooth ceramic plates prevent damage to your hair during styling. They are infused with tourmaline to give your style ultimate smoothness and shine.

Instant heat up



The straightener has a fast heat up time, being ready to use in 60 seconds

Swivel cord



Useful swivel cord technology rotates the cord to prevent tangled wires.

220°C variable temperature



High temperature enables you to change the shape of your hair and get the smooth look you want.

Handle closing lock



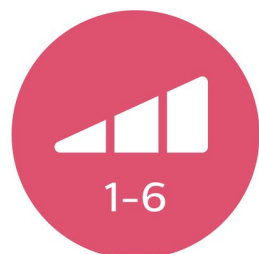
The straightener has a closing lock mechanism. Located at the base of the straightener, this locks plates, making storage quick and easy and helping to protect the straightener from accidental damage.

Universal voltage



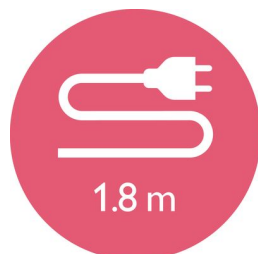
Worldwide voltage for getting the perfect travel companion

6 temperature settings



Variable temperature settings give you accurate control and allow you to adjust temperature to your hair type minimising the damage.

1.8 m cord



1.8 m power cord

2 years guarantee



2 years of worldwide guarantee.

Specifications

Technical specifications

Voltage: 110-240 V

Temperature settings: 140°C – 220°C

Heat-up time: 60 sec

Cord length: 1.8 m

Maximum temperature: 220 °C

Features

Hanging loop

Coating: Ceramic tourmaline

Swivel cord

Service

2-year worldwide guarantee

