

PHILIPS

SplitStop
straightener

StraightCare

with SplitStop technology

for split ends prevention

Ionic conditioning

Keratin infusion



BHS676



Put your hair in the spotlight

Up to 95% split-free ends*

Philips SplitStop straightener is designed to keep your hair split-free. The wide plates help in straightening thicker and longer hair faster. Thanks to our UniTemp sensor and SplitStop Technology you can enjoy beautifully styled hair with healthy looking ends!

Beautifully styled hair

- Keratin infusion for better care
- More care with ionic conditioning for shiny, frizz-free hair

Proven to prevent split ends

- SplitStop Technology for ultimate split ends prevention
- UniTemp sensor for beautifully styled hair with less heat
- Ceramic coating for smooth gliding and damage prevention
- 11 digital temperature settings for absolute control

Ease of use

- Extra wide plates (47mm) for long, coarse and thick hair
- Fast heat up time, ready to use in 30 sec
- 2m power cord
- Auto shut-off for safe usage

Highlights

SplitStop Technology



Our secret to ultimate split ends prevention is the new SplitStop Technology. It is a unique combination of UniTemp sensor and our smooth ceramic plates to respect the health of your hair. The UniTemp sensor protects your hair from being exposed to unnecessary high heat and our styling plates guarantee minimal friction for ultimate split ends protection.

UniTemp Sensor

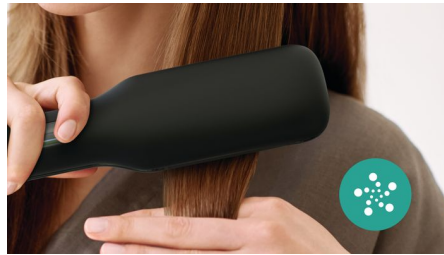


The UniTemp sensor protects your hair from being exposed to unnecessary high heat by providing a more consistent styling temperature for improved performance: Get the same results with a 20°C lower heat setting**. Create the perfect style with healthy-looking ends full of life.

Keratin infusion

Keratin is the hair's essential ingredient which makes them strong, healthy and gorgeous looking. The ceramic is enriched with keratin to even better take care of your hair.

Ionic Conditioning



Charged negative ions eliminate static, condition the hair and smooth down the hair cuticles to intensify the hair's shine and glossiness. The result is smooth, frizz-free hair with vibrant shine.

47mm wide plates



The straightening plates have an extra width of 47mm, especially designed for faster and easier straightening for thick and coarse hair.

Ceramic plates



The smooth ceramic coated plates prevent damage to your hair during styling with smooth gliding.

Digital temperature settings



Digital display with 11 temperature settings up to 230°C gives you absolute control to adjust temperature to your hair type for damage prevention.

Fast heat up time

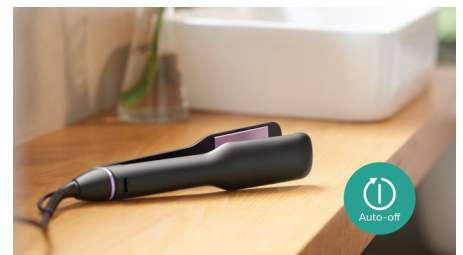


This styler has a fast heat up time, being ready to use in 30 seconds.

2m cord

Convenient to use thanks to the 2m power cord length.

Auto shut-off



This styler has been equipped with an automatic shut-off feature. This feature has been designed to provide peace of mind. If left on, the appliance will automatically switch off after 30 min.

Specifications

Technical specifications

Cord length: 1.8 m

Heat-up time: 30 sec

Heater Type: High-performance heater

Maximum temperature: 230 °C

Plate size: 47x75 mm

Voltage: 110-240 V

Features

Auto shut-off: After 30 minutes

Ceramic coating

Hanging loop

Swivel cord

Caring technologies

Ionic Care

Service

Guarantee: 2 - Year Worldwide Guarantee

