

PHILIPS

Wet and dry electric shaver

Shaver series 9000

V-Track Precision Blades

50 min cordless use/1h charge

SmartClick precision trimmer

SmartClean System Plus



S9511/63



Perfection in every pass

Cuts up to 20% more hair* in a single pass

The Shaver 9000 is our most advanced shaver yet. The unique contour detect technology offers exceptionally coverage over every contour of your face, and the V-Track system guides hairs into the best cutting position for the closest result.

Designed for perfection

- Blades perfectly guide hairs into position for a close shave
- Heads flex in 8 different directions for a superb result

A comfortable shave

- Lifts hairs to cut comfortably close
- Personalize your shave by choosing between three settings
- Get a comfortable dry or refreshing wet shave with Aquatec

Get the most of your shaver

- Keep your shaver like new with SmartClean
- Click-on trimmer for perfect mustache and sideburn trimming

Easy to use

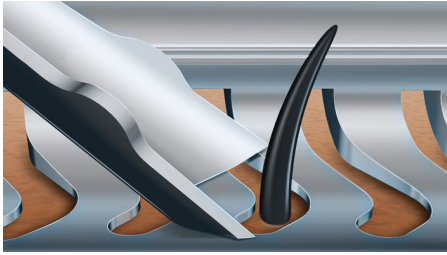
- Monitor shaver functions at a glance
- 50 minutes cordless shaving after a one-hour charge
- With 2 year guarantee



asimpleswitch.com

Highlights

V-Track precision blade system



Get the perfect close shave. The V-Track Precision Blades gently position each hair in the best cutting position, even the flat laying and different length of hairs. Cuts 30% closer in less strokes leaving your skin in great condition.

8-direction ContourDetectHeads



Follow every contour of your face and neck with 8-directional ContourDetect heads. You'll catch 20% more hairs with every pass. Resulting in an extremely close, smooth shave.

Super Lift & Cut Action



Shave closer with the dual-blade Super Lift & Cut action. The first blade raises each hair while the second blade comfortably cuts below skin level, for really smooth results.

Personal comfort settings



Choose between 3 modes to customize your shave: Sensitive – for a gentle, yet thorough shave. Normal – for a thorough, everyday shave. Fast – for a quick shave that saves you time.

Aquatec Wet & Dry



Choose how you prefer to shave. With the Aquatec Wet & Dry seal, you can opt for a quick yet comfortable dry shave. Or you can shave wet – with gel or foam – even under the shower.

SmartClean System PLUS



At the touch of a button SmartClean PLUS cleans, lubricates, dries and charges your shaver, so it'll perform at its best every day.

SmartClick precision trimmer



Click on our skin-friendly Precision Trimmer to finish your look. It's ideal for maintaining your mustache and trimming your sideburns.

5 level LED display



You can easily see how much power is left with the 5-level LED display. Your Philips close shaver will not only tell you when it's time to charge, it has indicators for locking, cleaning and replacing the head.



asimpleswitch.com

Philips Green Logo

Philips Green Products can reduce costs, energy consumption and CO2 emissions. How? They offer a significant environmental improvement in one or more of the Philips Green Focal Areas – Energy efficiency, Packaging, Hazardous substances, Weight, Recycling and disposal and Lifetime reliability.

Specifications

Shaving Performance

Shaving system: V-Track Precision Blade System, Super Lift & Cut Action

Contour following: 8-direction
ContourDetectHeads

SkinComfort: AquaTec Wet & Dry

Personal Comfort Settings: Sensitive-Normal-Fast settings

Accessories

SmartClean PLUS: Cleans, Dries, Charges, Lubricates, 3x Cleaning cartridge

SmartClick: Precision trimmer

Pouch: Travel pouch

Ease of use

Display: 5 level battery indicator, Cleaning indicator, Battery low indicator, Replace shaving heads indicator, Travel lock indicator

Cleaning: Fully washable

Design

Color: Dark Caramel

Handle: Ergonomic grip & handling

Power

Battery Type: Lithium-ion

Run time: 50 min / 17 shaves

Charging: Rechargeable, Charge 1 hour for 50 min use, Quick charge for 1 shave

Automatic voltage: 100-240 V

Stand-by power: 0.1 W

Maximum power consumption: 9 W

Service

2-year guarantee

Replacement head: Replace every 2 yrs with SH90

