

# PHILIPS

Stubble trimmer

Beardtrimmer series  
5000

0.2mm precision settings

Full metal blades

60 min cordless use/1h charge

Detail trimmer included



BT5202/83



## Effortless even trim with perfect details

### Dynamic beard guide system for an even result

This trimmer with full metal blades lets you achieve exactly the 3-day stubble, short beard, or long beard look you want. Our new integrated hair lift comb raises hairs for efficient one pass even trimming results.

#### Effortless trimming

- Lifts the hair up to the level of the blade for even results
- Guides the hairs to the cutter for effortless trimming
- Blades are double sharpened for faster trimming\*
- Keep perfect 3-day stubble by using the 0.4mm setting daily

#### Skin-friendly performance

- Skin-friendly, high-performance blades for the perfect trim

#### Easy to use

- 17 Lock-in length settings, 0.4 - 10mm with 0.2mm precision
- 60 minutes runtime after a 1 hour charge, or plug it in
- 100% waterproof for easy, thorough cleaning
- 2 year guarantee, worldwide voltage and no need to oil

#### Shape, edge, define your facial style

- Detail trimmer for perfect facial details
- Detail shaver for perfect lines and contours

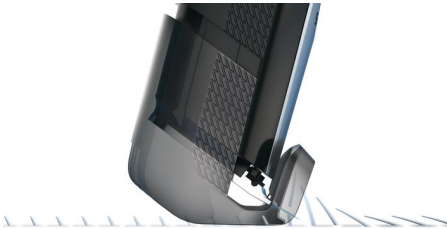
# Highlights

## Dynamic Beard Guide System



The Dynamic Beard Guide system with the help of the integrated hair lift comb lifts the hairs up to the level of the blades for even trimming results and lets you achieve exactly the 3-day stubble, short beard, or long beard look you want.

## Integrated Hair lift comb



Trim your stubble in one quick pass, while being gentle on your skin. Our new Integrated hair lift comb lifts and guides the hairs to the level of the blades for effortless, even trimming.

## Full metal blades



This trimmer comes with double sharpened full metal blades that cuts more hairs in every pass for faster trimming.

## 17 lock-in length settings



Select your preferred trim length by simply turning the zoom wheel on the handle until the length you want is displayed from 0,4 - 10mm with 0,2mm precision. Your chosen length is now "locked in" for a perfectly even trim.

## Corded and cordless use



60 minutes

Charge your beard trimmer for 1 hour to get 60 minutes of cordless use. If you need more energy while trimming, you can simply plug the trimmer into the wall. This trimmer has been designed to run both cordless and plugged in.

## 100% waterproof



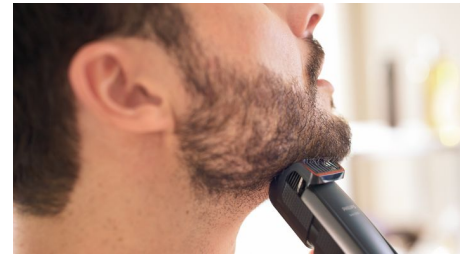
Simply rinse your waterproof beard trimmer under the tap to thoroughly clean it.

## Skin-friendly blades



Get a perfect yet protective trim, time after time. The beard trimmer's steel blades lightly brush against one another, sharpening themselves as they trim so they stay extra sharp and effective. They also have rounded tips and combs to help prevent skin irritation.

## Ideal stubble setting



Keep an ideal 3- day stubble, day after day, by using the trimmer's shortest 0.4mm setting.

## DualCut precision trimmer



The 21mm precision trimmer helps you trim evenly & shape your facial style (stubble, goatee, sideburns, neckline or mustache) with high control and visibility.

# Specifications

## Cutting system

**Precision (size of steps):** From 0.2mm

**Cutting element:** Stainless steel blades

**Non-scratching teeth:** For more comfort

## Create the look you want

**Number of length settings:** 17 integrated length settings

## Accessories

**Comb:** Integrated hair lift comb

**Detail trimmer included**

**Maintenance:** Cleaning brush

## Power

**Run time:** 60 minutes

**Charging:** 1 hour full charge

**Automatic voltage:** 100-240 V

## Ease of use

**Zoom wheel:** Easily adjust length settings

**Display:** Battery light

**Cleaning:** Fully washable

**Operation:** Corded & Cordless use

## Design

**Color:** Black

## Service

**2-year guarantee**

**No oil needed**

