

PHILIPS

Straightener

SalonStraight

Essential

HP8309/00



Straight hair made easy

SalonStraight Essential

Straighten your hair with this easy-to-use straightener

Beautifully styled hair

- Ceramic plates for smooth gliding and shiny hair
- 210°C professional high heat for perfect salon results

Ease of use

- Fast heat-up time, ready to use in 60 seconds
- Easy lock for convenient storage
- Swivel cord to prevent tangled wires
- 1.8 m power cord
- Universal voltage

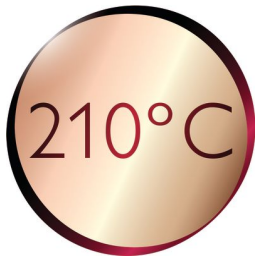
Highlights

Ceramic plates



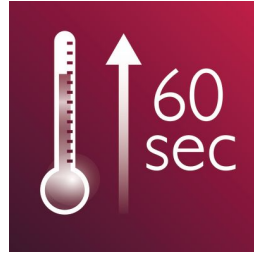
Ceramic is microscopically smooth and durable by nature, and is therefore one of the best materials for straightening plates. The plates glide effortlessly through your hair, giving you perfect shiny hair.

210°C professional temperature



This high temperature enables you change the shape of your hair, and gives you that perfect look, as if you've just come from the salon.

Instant heat up



The straightener has a fast heat-up time, being ready to use in 60 seconds

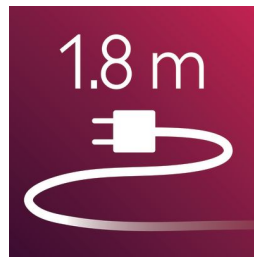
Easy lock

Easy lock for convenient storage

Swivel cord

Useful swivel cord technology rotates the cord to prevent tangled wires.

1.8 m cord



1.8 m power cord

Specifications

Technical specifications

Cord length: 1.8 m
Heater type: PTC
Maximum temperature: 210 °C
Heating time: 60s
Voltage: 110-240 V

Features

Ceramic coating
Swivel cord

Hair type

End result: Straight
Hair length: Long, Medium, Short
Hair thickness: Medium, Thick, Thin

Service

2-year worldwide guarantee

