

PHILIPS

Straightener

SalonStraight Sonic

HP4666/22



Styles in seconds, stays all day

SalonStraight Sonic

Professional results in 30% less time

Ease of use

- Automatic shut-off after 60 min
- Digital settings with adjustable heat to get smooth results
- Easy lock for convenient storage

Time saving

- Sonic Technology for great results in less time
- Instant heat: Ready to use within 30 seconds
- Included: heat resistant pouch

Beautifully styled hair

- EHD+ Technology
- 230°C professional high heat for perfect salon results

Less hair damage

- Swivel cord prevents tangled wires
- Ceramic Nano-Diamond plates for smooth gliding

Highlights

Safe usage



Some hair straighteners and curling irons have been equipped with an automatic shut-off feature. This feature has been designed to provide peace of mind. If left on, the appliance will automatically switch off after 60 min.

EHD+ Technology



EHD+ Technology heats evenly at high temperatures for professional results

Swivel cord

Swivel cord prevents tangled wires

Ceramic Nano-Diamond plates

for smooth gliding and shiny results

Sonic Technology

Sonic Technology for great results in less time

Instant heat

Instant heat: Ready to use within 30 seconds

Digital settings



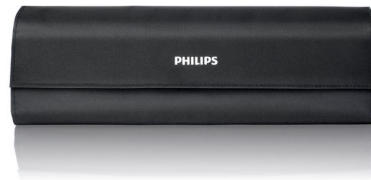
Digital settings with adjustable heat to get smooth results with all hairtypes

230°C professional temperature



This high temperature enables you change the shape of your hair, and gives you that perfect look like you've just come from the salon.

Included: heat resistant pouch



Included: heat resistant pouch

Easy lock

Easy lock for convenient storage

Specifications

Technical specifications

Cord length: 1,8 m

Maximum temperature: 230 °C

Serviceability

Replacement

Hair type

Current hair style: Straight, Wavy, Curly

End result: Straight

For fragile hair

Hair length: Long, Medium

Hair thickness: Thin, Thick

