

PHILIPS

shave & groom

Click & Style

2-in-1 tool

40 min cordless use/1h charge

ComfortCut Blade System



S728/20



One tool, any look

Get a smooth face and a groomed body really easily with this 2-in-1 tool. It has two separate attachments: for shaving and grooming. Just choose the one you want, click it onto the handle and get going.

Easy to use

- SmartClick system for easy click-on/off attachments
- Choose between 2 click-on/off attachments to get your look
- The handle and bodygroom attachment are water resistant
- 40 minutes battery use after 1-hour charge
- Indicates when battery is low, charging or full
- 2-year guarantee, worldwide voltage and replaceable blades

Smooth face

- For extra skin protection, use with shaving cream
- A close and safe shave

Groomed body

- Easy and safe body hair trimming and shaving



asimpleswitch.com

Highlights

SmartClick System



The SmartClick attachment system makes it easy to turn your Click&Style into a shaver or bodygroom. Just click the attachment you need onto the handle to complete your style.

Click-on/click-off attachments



Just click the attachment you need onto the handle to turn it into a shaver or bodygroom. Click it off again when you've finished. For a smooth face, choose the shaver. Want a sleek body? Time for the bodygroom. One tool, any look.

Smooth shave



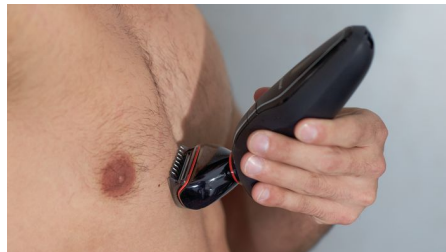
Shave wet with shaving cream for extra skin protection, or dry for convenience.

Smooth face



The dual rotary shaving attachment is designed for a close and clean shave with no nicks and cuts. The shaving heads move in 3 directions to easily follow your face's curves.

Groomed body



Rounded combs and patented pearl tips prevent skin irritation for reliably smooth grooming all over your body.

Water resistant



Comfortably trim and shave all your body hair, under the shower if you prefer.

Quick 1-hour charge

NiMH

40 minutes

Up to 40 min of cordless power after only 1 hour of charging.

Battery light



The battery light goes on to show when the battery is low, charging or is fully powered up.

Built to last



All of our shavers come with a 2-year worldwide guarantee and can adapt to any voltage. The long-lasting blades only need to be replaced after 2 years.



asimpleswitch.com

Philips Green Logo

Philips Green Products can reduce costs, energy consumption and CO2 emissions. How? They offer a significant environmental improvement in one or more of the Philips Green Focal Areas – Energy efficiency, Packaging, Hazardous substances, Weight, Recycling and disposal and Lifetime reliability.

Specifications

Shaving Performance

Shaving system: ComfortCut Blade System

Accessories

SmartClick: Body groomer

Maintenance: Protective cap

Usage: Bodygroom comb

Ease of use

Display: Battery light

Cleaning: Fully washable

Operation: Cordless use

Design

Handle: Anti-slip grip, Easy grip

Power

Automatic voltage: 100-240 V

Battery Type: NiMH

Charging: 1 hour full charge, Quick charge for 1 shave

Run time: Up to 40 minutes

Service

2-year guarantee

Replacement head: Replace every 2 yrs with SH30

