

PHILIPS

Hairdryer

2300W

HP8250/03



The expert's secret weapon

SalonDry Pro 2300 Hair Dryer

The new and improved SalonDry Pro 2300. This philips hair dryer is now 20% lighter, and has 30% more airflow

Beautifully styled hair

- Professional 2300W for great styling results
- 6 flexible speed and temperature settings
- Coolshot for seal in shine and fix your style
- Narrow concentrator for focused airflow
- Volume diffuser enhances volume, for curls and bouncy styles

Less Hair Damage

- Ceramic element to smooth your hair
- Ion conditioning for shiny, frizz free hair

Easy to use

- Removable air inlet grill for easy cleaning
- Easy storage hook
- 2.5m cord

Highlights

Professional 2300W



Professional 2300W for great styling results

6 flexible settings



6 flexible speed and temperature settings

Ion conditioning



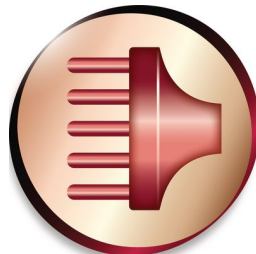
Ion conditioning for shiny, frizz free hair

Ceramic element



The ceramic element is included to prevent overdrying. It issues infrared heat, which has a gentle warmth which helps dries your hair from within and protects it from overdrying, without compromising on speed and effectiveness.

Volume diffuser



The volume diffuser dries hair healthily, reduces frizz and increases volume by spreading the airflow across the hair. It adds lift and maximises volume, especially when used on the crown and root area, making it perfect for creating curls and bouncy styles

Easy storage hook



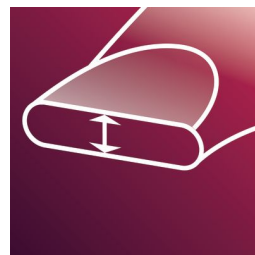
Easy storage hook

2.5m cord



The longer length results in improved flexibility and ease of handling, so you can use it anywhere you want.

Narrow concentrator



The concentrator works by focusing the flow of air through the opening onto specific areas. This results in precise styling and is great for touch ups or to finish a style.

Specifications

Technical specifications

Power: 2300 W

Cord length: 2.5 m

Features

Cool shot

Dual voltage: No

Ceramic coating

Ion conditioning

Hanging loop

Service

2-year guarantee

