

PHILIPS

shaving heads

UltraTrack

Replacement unit

RQ12/51



Keep a close shave

Change heads every 2 years for best results

Within two years your shaver heads cut 9 million hairs on your face. Replace the shaver heads and get back to 100% performance.

Follows the unique contours of your face

- Philips GyroFlex 3D system adjusts seamlessly to every curve

Sensationally smooth shave

- UltraTrack heads catch every hair with just a few strokes
- Shavers with Super Lift&Cut Action

An electric shaver which takes care of your skin

- Aquatec seal for comfortable dry & refreshing wet shaves
- Smooth, low-friction SkinGlide to minimize irritation

Simple replacement

- Easy click off, click on

Highlights

GyroFlex 3D Shaver



GyroFlex 3D contour-following heads of the shaver adjust seamlessly to every curve of your face, minimizing pressure and irritation on your skin.

UltraTrack Shaver Heads



Get a close shave that minimizes skin irritation. The shaving head has 3 specialized tracks: slots for normal hair; channels for long or flat laying hair; and holes for the shortest stubble on your face.

Super Lift & Cut Action



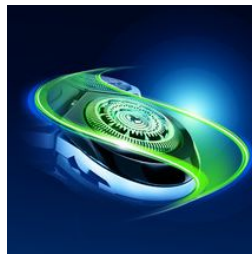
The dual blade system built into the Philips electric shaver lifts hairs to cut comfortably below skin level for a closer shave.

Aquatec



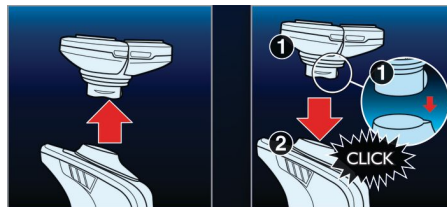
The Aquatec wet & dry seal of the electric shaver lets you choose how you prefer to shave. You can get a comfortable dry shave or a refreshing wet shave using a shaving gel or foam for extra skin comfort.

SkinGlide



The low-friction SkinGlide shaving surface of the electric shaver slides smoothly along your skin for a close easy shave.

Easy click off, click on



Easily renew your shaving unit using our click off, click on system.

Specifications

Shaving heads

Shaving units per packaging: 1

Fits product type: SensoTouch 3D (RQ12xx)

