

PHILIPS

Wet and dry electric shaver

Shaver series 9000

V-Track Precision Blades

8-direction
ContourDetectHeads

SmartClean System Plus

SmartClick beard styler



S9551/31



Perfection in every pass

Cuts up to 20% more hair* in a single pass

The Shaver 9000 is our most advanced shaver yet. The unique contour detect technology offers exceptional coverage over every contour of your face, and the V-Track system guides hairs into the best cutting position for the closest results.

Designed for perfection

- Blades perfectly guide hairs into position for a close shave
- Heads flex in 8 different directions for a superb result

A comfortable shave

- Personalize your shave by choosing between three settings
- Get a comfortable dry or refreshing wet shave with Aquatec

Easy to use

- Intuitive icons make the functions easy to use
- 50 minutes cordless shaving after a one-hour charge
- Shaver can be rinsed clean under the tap
- With 2 year guarantee

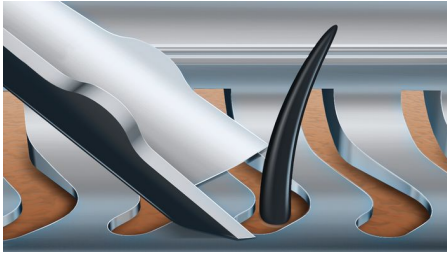
Get the most of your shaver

- Keep your shaver like new with SmartClean
- Click-on beard styler with 5 length settings



Highlights

V-Track precision blade system



Get the perfect close shave. The V-Track Precision Blades gently positions each hair in the best cutting position, even the flat laying and different length of hairs. Cuts 30% closer in less strokes leaving your skin in great condition.

Aquatec Wet & Dry



Choose how you prefer to shave. With the Aquatec Wet & Dry seal, you can opt for a quick yet comfortable dry shave. Or you can shave wet – with gel or foam – even under the shower.

5 level LED display



The intuitive display shows relevant information, enabling you to get the best performance out of your shaver: - 5-level battery and travel lock indicators - Cleaning Indicator - Battery Low Indicator - Replacement Head Indicator

8-direction ContourDetectHeads



Follow every contour of your face and neck with 8-directional ContourDetect heads. You'll catch 20% more hairs with every pass. Resulting in an extremely close, smooth shave.

SmartClean System PLUS



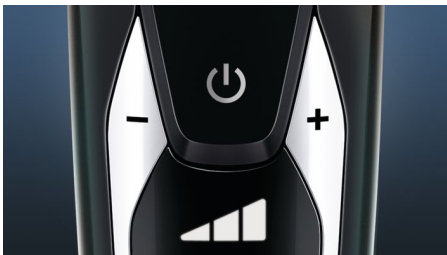
At the touch of a button SmartClean PLUS cleans, lubricates, dries and charges your shaver, so it'll perform at its best every day.



iF DESIGN AWARD 2015

Shaver series 9000iF DESIGN AWARD 2015

Personal comfort settings



Choose between 3 modes to customize your shave: Sensitive – for a gentle, yet thorough shave. Normal – for a thorough, everyday shave. Fast – for a quick shave that saves you time.

SmartClick beard styler



Change your look with the SmartClick Beard Styler attachment. Choose from 5 length settings to create anything from a perfect stubble look to a short, neatly trimmed beard. Rounded tips and combs are designed to prevent skin irritation.



asimpleswitch.com

Philips Green Logo

Philips Green Products can reduce costs, energy consumption and CO2 emissions. How? They offer a significant environmental improvement in one or more of the Philips Green Focal Areas – Energy efficiency, Packaging, Hazardous substances, Weight, Recycling and disposal and Lifetime reliability.

Specifications

Shaving Performance

Shaving system: V-Track Precision Blade System, Super Lift & Cut Action

Contour-following: 8-direction ContourDetectHeads

Skin comfort: AquaTec Wet & Dry

Personal Comfort Settings: Sensitive-Normal-Fast settings

Accessories

SmartClean PLUS: Cleans, Dries, Charges, Lubricates, Cleaning cartridge (included)

SmartClick: Beard styler

Pouch: Travel pouch

Ease of use

Display: 5 level battery indicator, Battery low indicator, Cleaning indicator, Replace shaving heads indicator, Travel lock indicator

Cleaning: Fully washable

Design

Color: Argus

Handle: Ergonomic grip & handling

Power

Battery Type: Lithium-ion

Run time: 50 min / 17 shaves

Charging: 1 hour full charge, Quick charge for 1 shave

Automatic voltage: 100-240 V

Stand-by power: 0.1 W

Max power consumption: 9 W

Service

2-year guarantee

Replacement head: Replace every 2 yrs with SH90

