

Philips Straightener

- SalonStraight
- Ceramic
- Active Ion



HP8310/00

Let it shine!

SalonStraight Active ION Hair straightener

SalonStraight Active ION Hair straightener with Ion Conditioning

Beautifully styled hair

- Ion Conditioning for shiny, frizz free hair
- 210C professional high heat for perfect salon results

Less hair damage

- Ceramic plates for smooth gliding and shiny hair

Ease of use

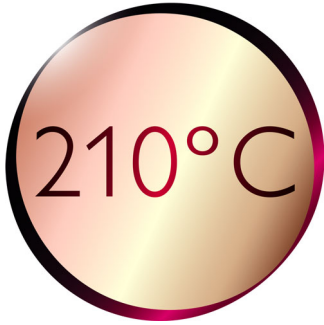
- Fast heat up time, ready to use in 60 seconds
- Automatic shut-off after 60 min
- Easy lock for convenient storage
- Swivel cord to prevent tangled wires
- 1.8 m cord for maximum flexibility
- Universal voltage



PHILIPS

Highlights

210C professional high heat



210C professional high heat for perfect, salon straight results

Instant heat up



The straightener has a fast heat up time, being ready to use in 60 seconds

Easy lock



Easy lock for convenient storage

Ion Conditioning



Ion Conditioning for shiny, frizz free hair

Safe usage



Some hair straighteners and curling irons have been equipped with an automatic shut-off feature. This feature has been designed to provide peace of mind. If left on, the appliance will automatically switch off after 60 min.

Swivel cord



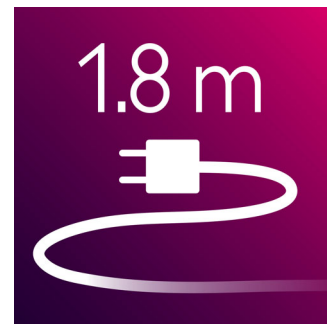
Useful swivel cord technology rotates the cord to prevent tangled wires.

Ceramic plates



Ceramic plates for smooth gliding and shiny hair

1.8 m cord



1.8 m cord for maximum flexibility

Specifications

Technical specifications

- Cord length: 1,8 m
- Maximum temperature: 210 °C
- Heating time: 60s
- Voltage: 110-240 V

Features

- Swivel cord
- Ceramic coating

Hair type

- End result: Straight
- Hair thickness: Medium, Thick, Thin
- Hair length: Long, Medium, Short

Service

- 2-year worldwide guarantee



Issue date 2013-05-18

Version: 11.2.1

© 2013 Koninklijke Philips N.V.
All Rights reserved.

Specifications are subject to change without notice.
Trademarks are the property of Koninklijke Philips N.V.
or their respective owners.

www.philips.com