

PHILIPS

Straightener

SalonStraight

Essential

HP8309



Straight hair made easy

SalonStraight Essential

Straighten your hair with this easy to use straightener

Beautifully styled hair

- 210°C professional high heat for perfect salon results
- Ceramic plates for smooth gliding and shiny hair

Ease of use

- Fast heat up time, ready to use in 60 seconds
- Easy lock for convenient storage
- Swivel cord to prevent tangled wires
- 1.8 m power cord
- Universal voltage

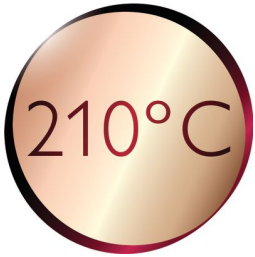
Highlights

Ceramic plates



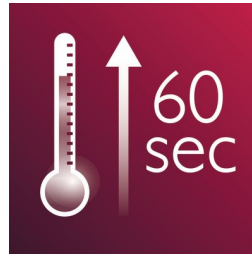
Ceramic plates for smooth gliding and shiny hair

210°C professional temperature



This high temperature enables you change the shape of your hair, and gives you that perfect look like you've just come from the salon.

Instant heat up



The straightener has a fast heat up time, being ready to use in 60 seconds

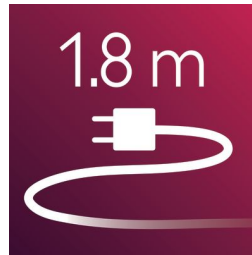
Easy lock

Easy lock for convenient storage

Swivel cord

Useful swivel cord technology rotates the cord to prevent tangled wires.

1.8 m cord



1.8 m power cord

Specifications

Technical specifications

Voltage: 110-240 V

Heating time: 60s

Cord length: 1.8 m

Heater type: PTC

Maximum temperature: 210 °C

Features

Temperature: 210 °C

Swivel cord

Ceramic coating

Hair type

End result: Straight

Hair length: Long, Medium, Short

Hair thickness: Medium, Thick, Thin

Service

2-year worldwide guarantee

