



Philips Multigroom
Grooming kit

Multigroom

QG3270

For all styles, no compromise

With Lithium Ion battery power

Multigroom for all styles, no compromise with Lithium ion battery power, superior performance and skin-friendly trimmer, designed to create any style you want with excellent precision, giving you that sense of pride with a perfect end result

Best performance that feels great

- Sharper edges for improved cutting performance
- The Rounded Guard is more gentle and glides better on the skin
- Quick charge and long-lasting battery performance
- Quick charge and long-lasting battery performance

Provides maximum ease of use

- Washable attachments

Create the look you want

- Full size trimmer for beard and head hair
- Mini shaver for finishing edges with a close shave result
- Precision detail trimmer to create and maintain your lines
- Hair clipper comb locks into 9 settings
- 41 mm hair clipper to style your hair
- Nose, ear and eyebrow trimmer
- Beard and moustache comb locks into 9 settings

PHILIPS

NORELCO

sense and simplicity

Highlights

Full size trimmer



Using the full size trimmer without a comb results in a stubble beard look.

9 position beard and moustache comb



9 length settings to trim your facial hair exactly as you want.

Nose, ear and eyebrow trimmer



To trim unwanted hairs in an easy and pain-free way.

Precision detail trimmer



Create any style you want with precision.

9 position hair clipper comb



9 length settings to keep your hair neat and styled.

Lithium ion battery



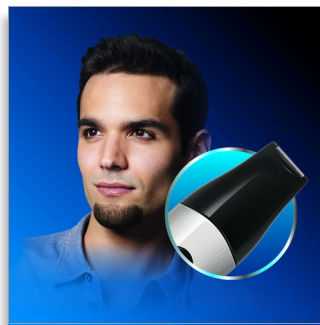
quick charge and long-lasting battery performance

Hair clipper



41 mm hair clipper for a sharp and even hair style result

Mini shaver



To finish your beard style, enjoy the use of the mini shaver, which finishes edges with a close shave result.

Washable attachments

Washable attachments for fast and convenient cleaning.

New sharper edges

Sharper edges provide an improved cutting performance for faster and better results

Rounded guard

The Rounded trimmer tips prevent scratching on the skin and provide the ultimate body comfort



Specifications

Ease of use

- Wet and Dry: Washable attachments

Power system

- Battery type: Li-Ion
- Charging time: 1 hour
- Running time: 50 minutes
- Usage: Cordless & mains
- Worldwide voltage: 100-240 V

Accessories

- Storage pouch

Create the look you want

- Styling tools: 9 position hair clipper comb, Beard

- and moustache comb
- Number of length settings: 9 secured length settings

Attachments

- Full size trimmer blade
- Mini shaver
- Precision trimmer: 21 mm
- Nose, ear and eyebrow trimmer
- Hair clipper: 41 mm

Maintenance

- Guarantee: 2-year worldwide guarantee
- Lubrication: Blades need no oiling



Issue date 2012-02-25

Version: 14.4.1

© 2012 Koninklijke Philips Electronics N.V.
All Rights reserved.

Specifications are subject to change without notice.
Trademarks are the property of Koninklijke Philips
Electronics N.V. or their respective owners.

www.philips.com