

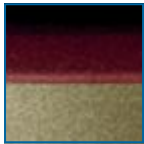
PHILIPS

Electric shaver

7000 series



HQ7310



Comfortably close

Shaves even the shortest hairs

This fully washable shaver allows you to rinse the shaver under the tap every time after use. You can count on a comfortable and close shave every day.

Simply rinses clean

- Washable shaver

Smooth skin contact

- Comfort shaving heads

Comfortably close

- Super Lift & Cut technology

Moustache and sideburn trimming

- Spring-released pop-up trimmer

Adjusts to every curve of your face and neck

- Reflex Action system

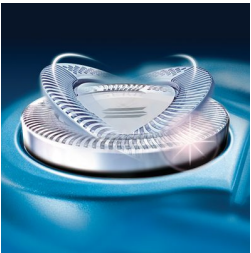
Highlights

Washable shaver



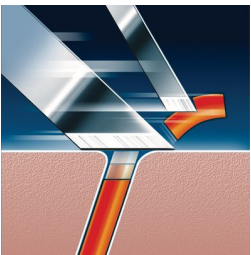
The waterproof shaver can be easily rinsed under the tap.

Comfort shaving heads



The skin friendly profile enables smooth skin contact for a comfortable shave.

Super Lift & Cut technology



The dual blade system lifts hairs to cut comfortably below skin level.

Pop-up trimmer



Full width, pop-up trimmer is perfect for grooming sideburns and moustache.

Reflex Action system



Automatically adjusts to every curve of your face and neck.

Specifications

Shaving Performance

Shaving System: Super Lift & Cut technology
Contour-following: Reflex Action system, Individual floating heads
Skin Comfort: Comfort shaving heads

Ease of use

Display: Battery full indicator, Charge indicator
Charging: Corded/cordless
Charging: 8 hours
Shaving time: 10 days
Cleaning: Washable

Design

Finishing: Varnish

Accessories

Maintenance: Cleaning brush, Protection cap

Power

Run time: 30 min

Service

Replacement head: Replace every 2 yrs with HQ8

