

PHILIPS

Straightener

HP4668/22



Long lasting straight and curly styles

SalonStraight Seduce

SalonStraight Seduce is a hair straightener that straightens and curls your hair.

Ease of use

- Automatic shut-off after 1 hour
- 1.8 m cord for maximum flexibility
- Digital settings with adjustable heat to get smooth results
- Easy lock for convenient storage

Time saving

- Included: heat resistant pouch

Beautifully styled hair

- Straight & Curl: rounded edges for flicks and curls
- 230°C professional high heat for perfect salon results

Less hair damage

- Ceramic plates for smooth gliding and shiny hair
- Swivel cord prevents tangled wires

Highlights

Automatic shut-off after 1 hour



Automatic shut-off after 1 hour

Ceramic plates

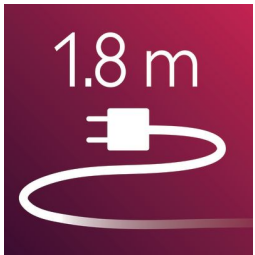


Ceramic plates for smooth gliding and shiny hair

Swivel cord

Swivel cord prevents tangled wires

1.8 m cord



1.8 m cord for maximum flexibility

Straight & Curl

Straight & Curl: rounded edges for flicks and curls

Digital settings



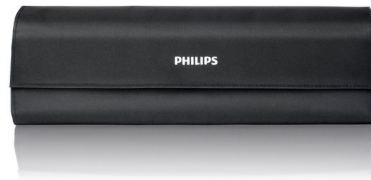
Digital settings with adjustable heat to get smooth results with all hairtypes

230°C professional temperature



This high temperature enables you change the shape of your hair, and gives you that perfect look like you've just come from the salon.

Included: heat resistant pouch



Included: heat resistant pouch

Easy lock

Easy lock for convenient storage

Specifications

Technical specifications

Cord length: 1,8 m

Maximum temperature: 230 °C

Serviceability

Replacement

Hair type

Current hair style: Straight, Wavy, Curly

End result: Straight, Wavy

For fragile hair

Hair length: Long, Medium

Hair thickness: Thin, Thick

