

# PHILIPS

Wet and dry electric shaver

Shaver series 9000

V-Track blade system PRO

8-direction  
ContourDetectHeads

Cleansing brush & P. trimmer



S9091/41



## Perfection in every pass

Cuts up to 20% more hair\* in a single pass

The Shaver 9000 is our most advanced shaver yet. The unique contour detect technology offers exceptional coverage over every contour of your face, and the V-Track system guides hairs into the best cutting position for the closest results.

### Designed for perfection

- Our best shaving system on 1-3 day beard
- Heads flex in 8 different directions for a superb result

### A comfortable shave

- Get a comfortable dry or refreshing wet shave with Aquatec

### Easy to use

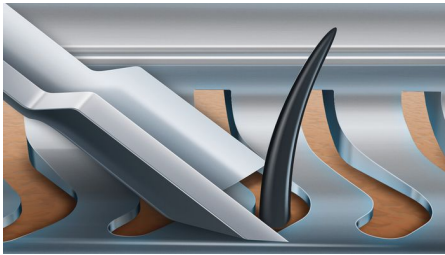
- 40 minutes cordless use after a one-hour charge
- Intuitive icons make the functions easy to use
- Shaver can be rinsed clean under the tap
- With 2 year guarantee

### Get the most of your shaver

- Click-on trimmer for perfect mustache and sideburn trimming
- Click-on brush for thorough facial cleansing

# Highlights

## V-Track blade system PRO



Get the perfect close shave. The V-Track Precision PRO Blades gently position each hair in the best cutting position, from 1 day up to 3 day beard and even the flat laying and different length of hairs. Cuts 30% closer\* in less strokes leaving your skin in great condition.

## 8-direction ContourDetectHeads



Follow every contour of your face and neck with 8-directional ContourDetect heads. You'll catch 20% more hairs with every pass. Resulting in an extremely close, smooth shave.

## Aquatec Wet & Dry



Choose how you prefer to shave. With the Aquatec Wet & Dry seal, you can opt for a quick yet comfortable dry shave. Or you can shave wet – with gel or foam – even under the shower.

## SmartClick cleansing brush



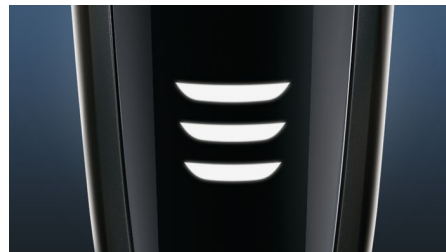
Click on brush to cleanse more thoroughly than by hand\*. Use it with the cleanser of your choice. It removes dead skin cells and increases micro-circulation, leaving your skin feeling fresh and radiant.

## SmartClick precision trimmer



Click on our skin-friendly Precision Trimmer to finish your look. It's ideal for maintaining your mustache and trimming your sideburns.

## 3 level LED display



The intuitive display shows relevant information, enabling you to get the best performance out of your shaver: - 3-level battery and travel lock indicators - Cleaning Indicator - Battery Low Indicator - Replacement Head Indicator

## 40 minutes of cordless shave



The advanced charging system gives you two convenient options: 40 minutes of running time after a single one-hour charge, or quick charge for one full shave. All Shaver series 9000 models are designed to operate only in cordless mode to ensure safety in wet environments.

## Fully washable shaver



Simply open the shaver head to rinse it thoroughly under the tap.

## Built to last



We back this Philips shaver with a 2-year guarantee. Our 9000 Series Shavers are designed for performance and durability, promising you an extremely close shave time after time.

# Specifications

## Shaving Performance

**Shaving system:** V-Track blade system PRO

**Contour following:** 8-direction

ContourDetectHeads

**SkinComfort:** AquaTec Wet & Dry

## Accessories

**SmartClick:** Deep facial cleansing brush,  
Precision trimmer

**Pouch:** Travel pouch

## Ease of use

**Display:** 3 level battery indicator, Battery low  
indicator, Cleaning indicator, Replace shaving  
heads indicator, Travel lock indicator

**Cleaning:** Fully washable

## Design

**Color:** Oyster Metallic

**Handle:** Ergonomic grip & handling

## Power

**Battery Type:** Lithium-ion

**Run time:** 40 min / 13 shaves

**Charging:** 1 hour full charge, Quick charge for 1

shave

**Automatic voltage:** 100-240 V

**Stand-by power:** 0.1 W

**Max power consumption:** 9 W

## Service

**2-year guarantee**

**Replacement head:** Replace every 2 yrs with  
SH90

**Cleansing brush RQ560 or RQ563:** Replace  
every 3-6 months

