

PHILIPS

Heated
straightening brush

StyleCare Essential

Extra large brush area

ThermoProtect technology

Tourmaline ceramic coating



BHH880/03



Naturally straight hair in 5 minutes*

Smooth, shiny, frizz-free hair

Reveal naturally straight, beautifully shiny hair in just 5 minutes. Our ThermoProtect technology and bristle design work together for healthy looking, frizz-free hair.

Care and protect

- Tourmaline ceramic coating
- ThermoProtect technology
- 2 temperature settings to suit your hair type
- Triple bristle design

Ease of use

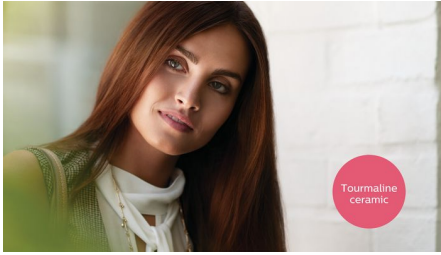
- Large paddle-shaped brush
- Fast heat-up time
- Ready to use indicator light
- 1.8m cord for maximum flexibility
- Swivel cord



asimpleswitch.com

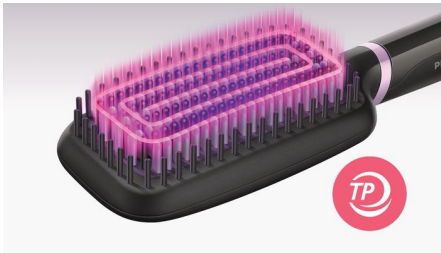
Highlights

Tourmaline ceramic coating



Tourmaline ceramic coating for shiny, smooth, frizz-free hair.

ThermoProtect technology



ThermoProtect technology maintains constant temperature across the brush to prevent overheating for protected, healthy looking hair.

2 temperature settings



Two temperature settings (170°C & 200°C) to best suit your hair type.

Triple bristle design



Triple bristle design gently detangles and straightens while protecting your scalp from heat.

Paddle-shaped brush



The paddle-shaped design to straighten more hair in one go.

Fast heat-up time



Ready to use in 50 seconds.

Ready to use indicator light



LED light indicates when the brush is ready to use.

1.8m cord



1.8m cord.

Swivel cord



Swivel cord for comfortable use.



[asimpleswitch.com](https://www.asimpleswitch.com)

Philips Green Logo

Philips Green Products can reduce costs, energy consumption and CO2 emissions. How? They offer a significant environmental improvement in one or more of the Philips Green Focal Areas – Energy efficiency, Packaging, Hazardous substances, Weight, Recycling and disposal and Lifetime reliability.

Specifications

Caring technologies

Tourmaline ceramic coating
ThermoProtect

Features

Temperature Settings: 2 settings, 170°C and 200°C

Brush shape: Paddle

Brushing area (mm): 116 L x 60 W

Number of heated bristles: 111

Auto shut-off: after 60 min

Ease of use

Storage hook

Swivel cord

Technical specifications

Product size (mm): 350 L x 75 W x 48 D

Total number of bristles: 247

Heater type: PTC

LED light indicator: White color

Cord length: 1.8 m

Voltage: Universal V

Service

2-year guarantee

