

# PHILIPS

ThermoProtect  
straightener

StraightCare  
Essential

ThermoProtect technology  
Keratin-infused plates  
10 temperature settings



BHS377/00



## Smooth and shiny hair with care and control

Specially designed for easy and fast styling with long Keratin-infused plates and 10 temperature settings. Care for your hair with ThermoProtect technology preventing overheating.

### Beautifully styled hair

- Temperature range from 160°C up to 230°C

### Care for your hair

- ThermoProtect technology
- Keratin ceramic plates for smooth gliding and shiny hair

### Ease of use

- 10 temperature settings for better control
- 100mm long plates for fast and easy straightening
- Fast heat-up time, ready to use in 30 sec
- Auto shut-off for safe usage
- Key-lock function for safe and easy storage
- Universal voltage for worldwide use



[asimpleswitch.com](http://asimpleswitch.com)

# Highlights

## ThermoProtect technology



ThermoProtect technology distributes heat evenly across the plates, preventing overheating to protect your hair.

## 100mm long plates



The longer 100mm plates enable better contact with the hair to help you achieve perfect straightening results easier and in less time.

## Universal voltage



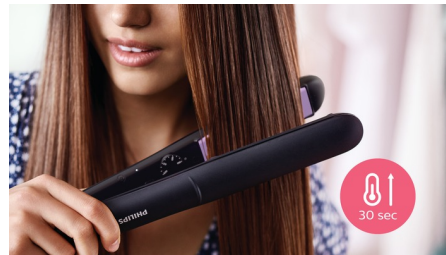
Compatible with 110-240 volts. Can be used wherever you travel in the world.

## Keratin ceramic plates



Keratin-infused ceramic plates glide smoothly through your hair, for quick and easy styling.

## Fast heat-up time



The straightener has a fast heat-up time, being ready to use in 30 seconds.

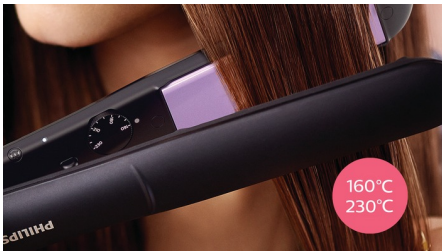


[asimpleswitch.com](https://www.asimpleswitch.com)

## Philips Green Logo

Philips Green Products can reduce costs, energy consumption and CO2 emissions. How? They offer a significant environmental improvement in one or more of the Philips Green Focal Areas – Energy efficiency, Packaging, Hazardous substances, Weight, Recycling and disposal and Lifetime reliability.

## Temperature range



Choose between temperature range from 160°C up to 230°C to secure long-lasting result while minimizing risk of hair damage.

## Auto shut-off



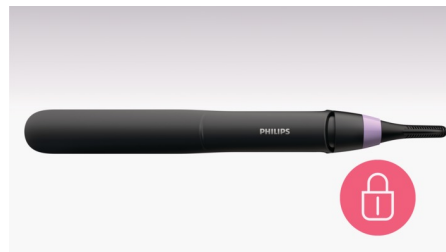
The styler has an automatic shut-off function for safe usage. It automatically switches off after 60 minutes.

## 10 temperature settings



Variable temperature settings for better control. Lower temperatures for last minute touch ups and gentle styling. Higher temperatures for long lasting results.

## Key-lock function



The plates can be locked together for safe and easy storage.

# Specifications

## Technical specifications

Styling temperature: 160°C - 230°C

Type of temperature control: Turning rheostat

Voltage: 110-240 V

Long plates: 28X100mm

Heat-up time: 30 sec

Cord length: 1.8 m

## Features

Material plates: Keratin-infused ceramic plates

Storage hook

Swivel cord

Plate lock

Ready to use light

## Service

2-year worldwide guarantee

