

PHILIPS

Shaving unit

Flex & Pivot Action

RQ10



Keep a close shave

Change heads every 2 years for best results

Every year your blades travel the height of Mt. Everest... 49 times! After such a workout, even the best materials can lose their edge. Retain your shaver's peak performance – replace heads every 2 years.

Comfortably close

- Super Lift & Cut shaving technology with dual blade system

A fast and close shave

- Triple-Track shaving heads with 50% more shaving surface

Perfectly close, even on the neck

- Flex & Pivot Action follows every curve

Simple replacement

- Easy click off, click on

Highlights

Triple-Track shaving heads



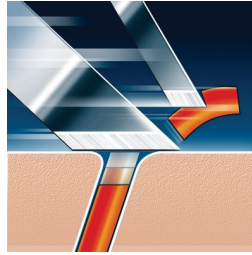
The three shaving tracks of the Triple-Track shaving heads offer 50% more shaving surface than standard, single track rotary shaving heads.

Flex & Pivot Action



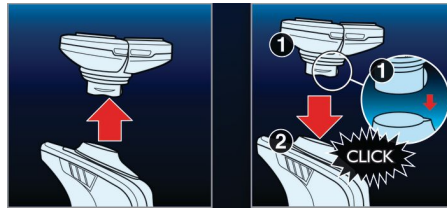
Three independently flexing heads in a shaving unit that swivels with a full range of motion. This unique combination ensures optimum skin contact in curved areas to catch even the most problematic neck hair.

Super Lift & Cut technology



Dual blade system: first blade lifts, second blade cuts for a comfortable close shave.

Easy click off, click on



Easily renew your shaving unit using our click off, click on system.

Specifications

Shaving heads

Fits product types: RQ1050, RQ1060, RQ1075, RQ1085, RQ1095, RQ1051, RQ1052, RQ1053, RQ1061, RQ1062, RQ1076, RQ1077, RQ1087, RQ1090

Shaving units per packaging: 1

