

# PHILIPS

wet and dry electric shaver

Shaver series 9000

V-Track Precision Blades

50 min cordless use/1h charge

SmartClick beard styler

SmartClean System Plus



S9511/31



## Perfection in every pass

Cuts up to 20% more hair\* in a single pass

The Shaver 9000 is our most advanced shaver yet. The unique contour detect technology offers exceptionally coverage over every contour of your face, and the V-Track system guides hairs into the best cutting position for the closest result.

### Designed for perfection

- Blades perfectly guide hairs into position for a close shave
- Heads flex in 8 different directions for a superb result

### A comfortable shave

- Lifts hairs to cut comfortably close
- Personalize your shave by choosing between three settings
- Get a comfortable dry or refreshing wet shave with Aquatec

### Get the most of your shaver

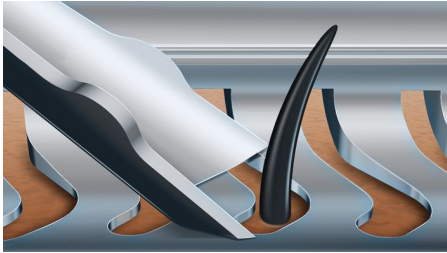
- Keep your shaver like new with SmartClean
- Click-on beard styler with 5 length settings

### Easy to use

- Intuitive icons make the functions easy to use
- 50 minutes cordless shaving after a one-hour charge
- With 2 year guarantee

# Highlights

## V-Track precision blade system



Get the perfect close shave. The V-Track Precision Blades gently position each hair in the best cutting position, even the flat laying and different length of hairs. Cuts 30% closer in less strokes leaving your skin in great condition.

## 8-direction ContourDetectHeads



Follow every contour of your face and neck with 8-directional ContourDetect heads. You'll catch 20% more hairs with every pass. Resulting in an extremely close, smooth shave.

## Super Lift & Cut Action



Shave closer with the dual-blade Super Lift & Cut action. The first blade raises each hair while the second blade comfortably cuts below skin level, for really smooth results.

## Personal comfort settings



Choose between 3 modes to customize your shave: Sensitive – for a gentle, yet thorough shave. Normal – for a thorough, everyday shave. Fast – for a quick shave that saves you time.

## Aquatec Wet & Dry



Choose how you prefer to shave. With the Aquatec Wet & Dry seal, you can opt for a quick yet comfortable dry shave. Or you can shave wet – with gel or foam – even under the shower.

## SmartClean System PLUS



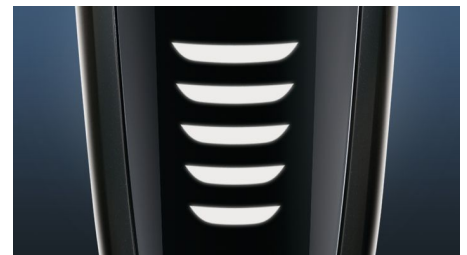
At the touch of a button SmartClean PLUS cleans, lubricates, dries and charges your shaver, so it'll perform at its best every day.

## SmartClick beard styler



Change your look with the SmartClick Beard Styler attachment. Choose from 5 length settings to create anything from a perfect stubble look to a short, neatly trimmed beard. Rounded tips and combs are designed to prevent skin irritation.

## 5 level LED display



The intuitive display shows relevant information, enabling you to get the best performance out of your shaver: - 5-level battery and travel lock indicators - Cleaning Indicator - Battery Low Indicator - Replacement Head Indicator

## 50 minutes of cordless shaving



Our advanced charging system gives you two convenient options: charge for one hour and you'll get 50 minutes of running time, or do a quick charge for one full shave. All 9000 Series Shavers contain a powerful energy-efficient, long-lasting lithium-ion battery. They are designed to operate only in cordless mode, to ensure you'll always be safe when shaving with water, even under the shower.

# Specifications

## Shaving Performance

**Shaving system:** V-Track Precision Blade System, Super Lift & Cut Action

**Contour-following:** 8-direction ContourDetectHeads

**Skin comfort:** AquaTec Wet & Dry

**Personal Comfort Settings:** Sensitive-Normal-Fast settings

## Accessories

**SmartClean PLUS:** Cleans, Dries, Charges, Lubricates, Cleaning cartridge (included)

**SmartClick:** Beard styler

**Pouch:** Travel pouch

## Ease of use

**Cleaning:** Fully washable

**Display:** 5 level battery indicator, Cleaning indicator, Battery low indicator, Replace shaving heads indicator, Travel lock indicator

## Design

**Color:** Dark Caramel

**Handle:** Ergonomic grip & handling

## Power

**Battery Type:** Li-ion

**Run time:** 50 min / 17 shaves

**Charging:** Rechargeable, Charge 1 hour for 50 min use, Quick charge for 1 shave

**Automatic voltage:** 100-240 V

**Stand-by power:** 0.1 W

**Maximum power consumption:** 9 W

## Service

**2-year guarantee**

**Replacement head:** Replace every 2 yrs with SH90

