

PHILIPS

Wet or Dry electric shaver, Series 3000

Shaver series 3000

5D Pivot & Flex Heads

PowerCut Blades

60 min shaving, 1 hr charge

Travel pouch



S3233/52



Clean shave, More comfort

Philips Shaver Series 3000 gives you a convenient and comfortable shave. Its 5D Pivot & Flex heads, PowerCut blade system, and wet or dry function provides a clean and comfortable result.

A comfortable shave

- Follows the contours of your face for a comfortable shave
- Glides over your skin for a smooth and even finish
- Choose a convenient dry or refreshing wet shave
- Glides over skin for a comfortable, even shave

Easy to use

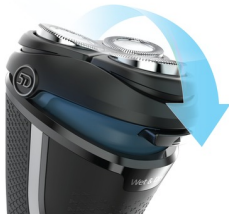
- One-touch open for easy cleaning
- 60 minutes of cordless shaving from a 1-hour charge
- Keep your charge in check
- Designed for optimum handling
- Anti-slip handle for a secure shave
- Convenient storage at home or on-the-go

Get the most out of your shaver

- A 5-minute power boost for short notice shaving
- Even-up your mustache and sideburns

Highlights

5D Pivot & Flex Heads



The Philips Shaver 3000 features a 5-directional pivot that meets every angle and curve of your face and neck. This beard shaver cuts each hair right above skin level, to give you a smooth and even finish.

PowerCut Blades



The Philips shaver for a clean and comfortable finish. Its 27 PowerCut blades cut each hair right above skin level, giving you a smooth and even shave, every time.

Shave wet or dry



A wet and dry shaver that adapts to your preference. Choose a convenient dry shave, or pair with your favourite foam or gel for a refreshing wet shave.

60 minutes of cordless shaving



A shaver for at home or on-the-go. Get 60 minutes of shaving time from a 1-hour charge, or plug it in for instant and continuous power.

One-touch open



Clean your electric shaver with the touch of a button. Simply flip open the shaver head and rinse with water.

3-level battery indicator



See how much power your shaver has left. The 3-level battery indicator shows when the battery is full, running low, or if it's charging.

5-minute quick charge



In a hurry? Just plug in your shaver for 5 minutes and get enough power for 1 full shave.

27 self-sharpening blades



The 27 self-sharpening blades on this electric shaver have been precision-engineered for a consistently clean shave.

Pop-up trimmer



Refine and define your mustache and sideburns with the pop-up trimmer—and complete your look with ease.

Ergonomic design



Handle your Philips shaver with confidence thanks to an ergonomic design created for optimum grip.

Specifications

Shaving Performance

Shaving system: PowerCut blade system

Contour following: 5D Pivot & Flex Heads

Accessories

Pouch: Travel pouch

Maintenance: Protective cap

Ease of use

Display: 3 level battery indicator

Wet & Dry: Shave wet or dry

Cleaning: One-touch open, Fully washable

Operation: Unplug before use, Cordless use only

Design

Color: Dark Moon

Handle: Ergonomic grip & handling, Non-slip rubber handle

Power

Battery Type: Lithium-ion

Run time: 60 minutes

Charging: 1 hour full charge

Automatic voltage: 100-240 V

Service

Replacement head: Replace every 2 yrs with SH30

2-year warranty

