



Philips  
Airstyler

Dynamic Volume Brush  
Ceramic



HP8665/00

## Dry & Style with care

Airstyler with special 'Care' setting

The Dynamic Volumebrush is a rotating airstyler providing the most caring way to dry & style hair. It uses natural bristles for smoother hair and less friction. The special 'Care' setting provides the best temperature to dry the hair

### Beautifully styled hair

- 1000W for professional results
- Natural mixed bristle brush: 2 brush heads (30mm and 50mm)

### Less Hair Damage

- Best drying temperature with 'Care' setting
- More Care with ion conditioning for shiny, frizz-free hair
- More Care with ceramic elements, providing far infrared heat
- Natural bristles for smoother hair and less friction

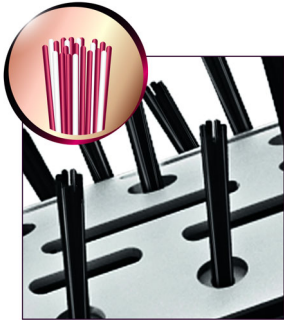
### Easy to use

- 2 different rotation speed settings
- The brush can be rotated in both directions
- The brush caps protect the bristles from any damage



# Highlights

## Natural bristles



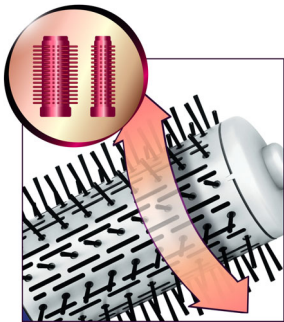
Some natural bristles are used in the brush to give the hair a smoother feeling. With less friction the hair gets less damaged.

## 'Care' setting



The 'Care' temperature provides the optimal drying temperature and gives additional protection from overheating the hair. With the same powerful airflow, you will get the best results in a caring way.

## 2 way rotation



The brush can be rotated in both directions for easy handling and the creation of a variety of styles.

## Ionic Care



Ionic conditioning enables anti-static drying. Charged negative ions eliminate static hair, condition the hair and smooth down the hair cuticles to intensify the hair's shine and glossiness. The result is smooth and frizz-free hair that shines beautifully.

## More care with Ceramic element



The ceramic element issues far infrared heat, which has a gentle warmth that helps dry your hair from within and protects it from overdrying, without compromising on speed and effectiveness.

## Brush caps



The brush caps protect the bristles from any damage when storing the Dynamic Volumebrush.

# Specifications

## Technical specifications

- Wattage: 1000 W
- Cord length: 1.8 m
- Color/finishing: white and purple

## Features

- Ceramic coating
- Ion conditioning
- Swivel cord
- Hanging loop
- Settings: 3 heat/speed settings

## Attachments

- Natural mixed bristle brush: 2 brush heads (30mm and 50mm)

## Hair type

- End result: Voluminous
- Hair length: Medium, Long
- Hair thickness: Thin, Medium, Thick

## Service

- 2-year guarantee

