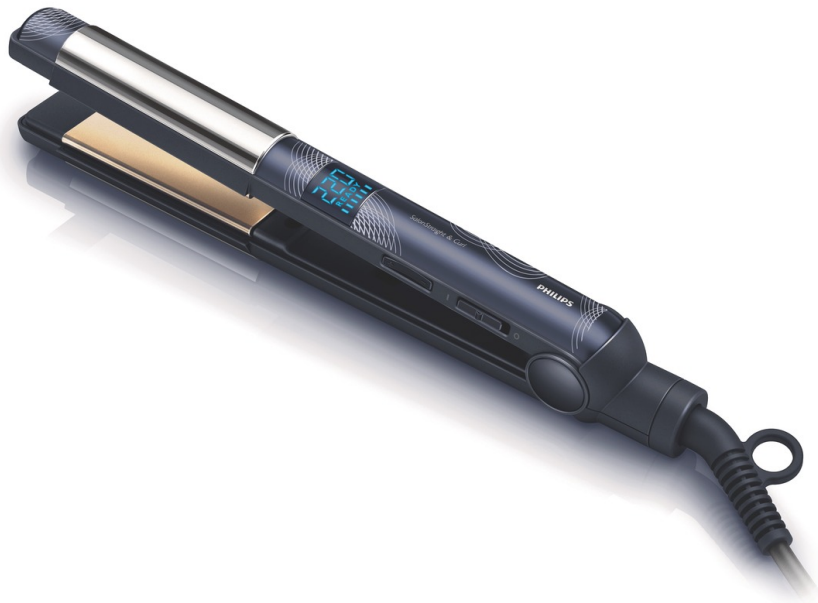


PHILIPS

Straightener



HP8290/00



Straight, curl and care

SalonStraight & Curl Hair Straightener

Get straight, wavy or curly hair with the SalonStraight & Curl. This versatile ceramic hair straightener and curler in one, operates with care to a professional temperature of 220°C and features adjustable digital settings.

Beautifully styled hair

- 220°C professional high heat for perfect salon results
- Ceramic plates for smooth gliding and shiny hair
- CoolShield to set your style
- Rounded edges for perfect curls and beautiful waves

Less hair damage

- EHD+ technology for more protection and shinier results

Ease of use

- Digital settings with adjustable heat to get smooth results
- Fast heat up time, ready to use in 60 seconds
- Automatic shut-off after 60 min
- Included: pouch
- 1.8 m cord for maximum flexibility
- Swivel cord to prevent tangled wires
- Universal voltage

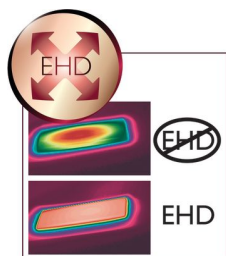
Highlights

Ceramic plates



Ceramic is microscopically smooth and durable by nature and it is one of the best materials for straightening plates. The plates glide effortlessly through your hair, giving you perfect shiny hair.

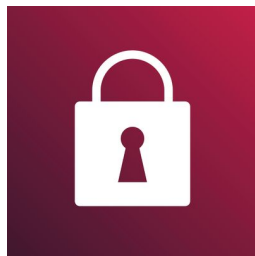
EHD+ technology



Advanced Philips EHD+ technology means that your styler will always distribute the heat very evenly - even at high temperatures, and prevents damaging hot spots. This gives added protection and thus helps to keep your hair healthy and shiny.



Safe usage

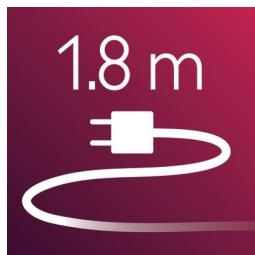


Some hair straighteners and curling irons have been equipped with an automatic shut-off feature. This feature has been designed to provide peace of mind. If left on, the appliance will automatically switch off after 60 min.

Included: pouch

Included: pouch

1.8 m cord



1.8 m cord for maximum flexibility

Digital settings

Digital settings with adjustable heat to get smooth results with all hairtypes

Specifications

Technical specifications

Heating time: 60s

Cord length: 1,8 m

Maximum temperature: 220 °C

Hair type

End result: Multi-styles, Straight

Hair length: Long, Medium

Hair thickness: Thin, Thick

Features

Swivel cord

Ceramic coating

Hanging loop

