

PHILIPS

Hairdryer

ThermoProtect Ionic

2300W

ThermoProtect setting
with massaging volume diffuser
Ionic Care



HP8238/00



4x more ions for ultimate shiny hair with massaging diffuser & 11mm styling nozzle

Protect your hair while enjoying fast drying results. This hair dryer has multiple speed and temperature settings. Features include ThermoProtect for fast drying at a constant caring temperature and Ionic Care.

Beautifully styled hair

- Professional 2300W
- Cool Shot sets your style
- Maximizes volume & boosts curls while gently massaging scalp
- Six flexible speed and temperature settings for full control
- Ultra slim styling nozzle of 11mm for precision styling

Less Hair Damage

- 4 times stronger ionic conditioning for ultimate shine
- ThermoProtect temperature setting

Easy to use

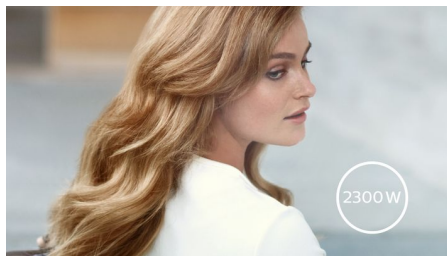
- Easy storage hook for convenient storage
- 1.8 m power cord
- Elegant, feminine design emphasising performance and quality
- Removeable air flow filter makes cleaning quick and easy



asimpleswitch.com

Highlights

2300W



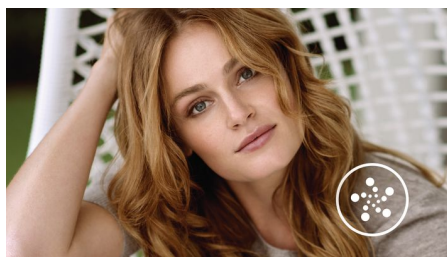
This 2300W professional hairdryer creates a powerful airflow. The resulting combination of power and speed makes drying and styling your hair quicker and easier.

Premium Design



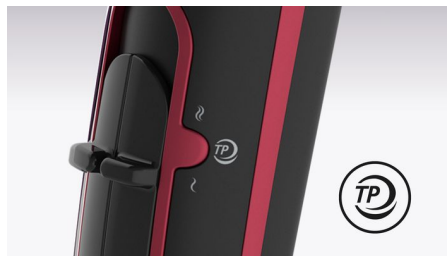
This hairdryer embodies a modern, sophisticated approach to design. Soft, fluid contours and elongated proportions subtly communicate femininity while precision detailing and high quality materials and finishes are evidence of the product's superior performance.

Extra ionic care



Give your hair an intensive boost with ionic conditioning. This hairdryer emits 4 times more negatively charged ions than other hairdryers. The result is ultimate shiny, frizz-free hair. Let it shine!

ThermoProtect temperature



The ThermoProtect temperature provides the optimal drying temperature and gives additional protection from overheating the hair. With the same powerful airflow, you will get the best results in a caring way.

Speed and temperature settings



The speed and heat required can be easily adjusted to create the perfect style. Six different settings ensure full control for precise and tailored styling.

Ultra slim styling 11mm nozzle



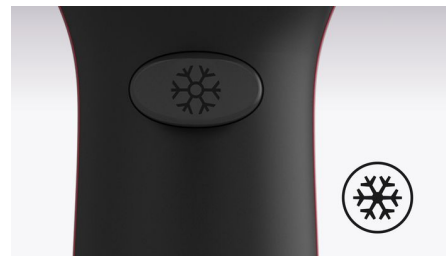
The ultra thin styling nozzle concentrates the flow of hair through the 11mm nozzle for precision styling on specific areas. Great for touch ups or to set your style.

Asymmetric massaging diffuser



The asymmetric massaging diffuser has a unique asymmetric design that is contoured to the head, making it easier and more intuitive to use. The diffuser spreads the flow of air across the hair, drying hair more healthy, boosting volume and reducing frizz while the addition of massage helps stimulate the scalp and improve hair vitality. For best results, hold close to the crown and root area and let the diffuser's massaging textured pins encourage volume, add bounce and shape curls.

Cool Shot



A must-have professional function for hair stylists. The Cool Shot button provides an intense burst of cold air. It is used after styling to finish and set the style.



[asimpleswitch.com](https://www.asimpleswitch.com)

Philips Green Logo

Philips Green Products can reduce costs, energy consumption and CO2 emissions. How? They offer a significant environmental improvement in one or more of the Philips Green Focal Areas – Energy efficiency, Packaging, Hazardous substances, Weight, Recycling and disposal and Lifetime reliability.

Specifications

Technical specifications

Voltage: 220-240 V

Frequency: 50-60 Hz

Wattage: 2300 W

Power: 2300 W

Color/finishing: Glossy Black & Purple gradient

Housing material: PC

Motor: DC Motor

Cord length: 1.8 m

Features

Foldable handle: No

Cool shot

Dual voltage: No

Travel pouch: No

Ceramic coating: Ceramic Element

Ion conditioning

Hanging loop

Diffuser: Massaging volume diffuser

Nozzle / Concentrator: Ultra slim styling 11mm nozzle

Number of attachments: 2

Service

2-year guarantee

Weight & dimensions

A-Box Dimensions: Length = 63cm, Width = 35cm, Height = 25cm

A-Box Weight: 6.3kg

F-Box Dimensions: Depth = 11cm, Height = 23cm, Width = 31cm

F-Box weight: 1kg

Product size: Width = 22cm, Height = 31cm, Length = 10cm

Product weight (excl. pack): 0.6kg

