

PHILIPS

Wet and dry electric shaver

Shaver series 9000

V-Track Precision Blades

8-direction
ContourDetectHeads

SmartClean System

SmartClick precision trimmer



S9031/26



Perfection in every pass

Cuts up to 20% more hair* in a single pass

The Shaver 9000 is our most advanced shaver yet. The unique contour detect technology offers exceptional coverage over every contour of your face, and the V-Track system guides hairs into the best cutting position for the closest results.

Designed for perfection

- Blades perfectly guide hairs into position for a close shave
- Heads flex in 8 different directions for a superb result

A comfortable shave

- Get a comfortable dry or refreshing wet shave with Aquatec
- Dense beards don't stand a chance

Easy to use

- Intuitive icons make the functions easy to use
- 50 minutes cordless shaving after a one-hour charge
- Shaver can be rinsed clean under the tap
- With 2 year guarantee

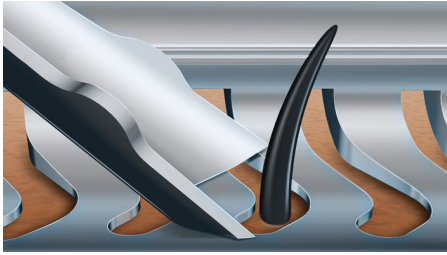
Get the most of your shaver

- Keep your shaver like new with SmartClean
- Click-on trimmer for perfect mustache and sideburn trimming



Highlights

V-Track precision blade system



Get the perfect close shave. The V-Track Precision Blades gently position each hair in the best cutting position, even the flat laying and different length of hairs. Cuts 30% closer in less strokes leaving your skin in great condition.

8-direction ContourDetectHeads



Follow every contour of your face and neck with 8-directional ContourDetect heads. You'll catch 20% more hairs with every pass. Resulting in an extremely close, smooth shave.

Aquatec Wet & Dry



Choose how you prefer to shave. With the Aquatec Wet & Dry seal, you can opt for a quick yet comfortable dry shave. Or you can shave wet – with gel or foam – even under the shower.

BeardAdapt Sensor



This electric shaver comes complete with a BeardAdapt Sensor that reads the density of your beard. It then auto-adjusts the power for the job at hand. Easy.

SmartClean System



At the touch of a button, SmartClean cleans, lubricates and charges your shaver, keeping it performing at its best, day in and day out.

SmartClick precision trimmer



Click on our skin-friendly Precision Trimmer to finish your look. It's ideal for maintaining your mustache and trimming your sideburns.

3 level LED display



The intuitive display shows relevant information, enabling you to get the best performance out of your shaver: – 3-level

battery and travel lock indicators – Cleaning Indicator – Battery Low Indicator – Replacement Head Indicator



iF DESIGN AWARD 2015

Shaver series 9000 Precision, control and maneuverability are the defining features of the 9000 shaver. The V-Track system guides hairs into the best cutting position for the closest result, while fully flexible eight directional heads catch more hairs for a clean shave in fewer strokes. The "AquaTec Wet & Dry" seal of this shaver allows for a comfortable dry shave or a refreshing wet shave, using a shaving gel or foam for extra skin comfort.



asimpleswitch.com

Philips Green Logo

Philips Green Products can reduce costs, energy consumption and CO2 emissions. How? They offer a significant environmental improvement in one or more of the Philips Green Focal Areas – Energy efficiency, Packaging, Hazardous substances, Weight, Recycling and disposal and Lifetime reliability.

Specifications

Shaving Performance

SkinComfort: AquaTec Wet & Dry, BeardAdapt Sensor

Contour following: 8-direction
ContourDetectHeads

Shaving system: V-Track Precision Blade System, Super Lift & Cut Action

Accessories

SmartClean: Cleans, Charges, Lubricates, Cleaning cartridge (included)

SmartClick: Precision trimmer

Pouch: Travel pouch

Ease of use

Display: 3 level battery indicator, Cleaning indicator, Battery low indicator, Replace shaving heads indicator, Travel lock indicator

Cleaning: Fully washable

Design

Color: Black Satin

Handle: Ergonomic grip & handling

Power

Battery Type: Lithium-ion

Run time: 50 min / 17 shaves

Charging: Quick charge for 1 shave, 1 hour full charge

Automatic voltage: 100-240 V

Max power consumption: 9 W

Stand-by power: 0.1 W

Service

2-year guarantee

Replacement head: Replace every 2 yrs with SH90

Software

Software update: Philips offers relevant software updates for a period of 2 years after the date of purchase

