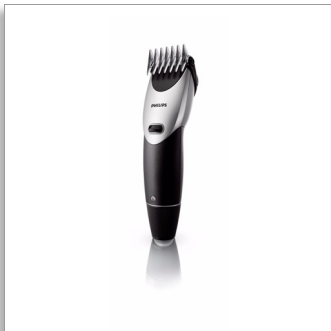




Philips
Hair clipper

With contour following comb



QC5050

Super-easy hairclipper

Select length, lock, go

This super-easy hair clipper enables you to create any style you want in up to 8 length settings from 1-21 mm. Just select the right hair length, lock and go. Now with extra stubble comb for extra short haircuts and 3-day stubble look.

Best performance that feels great

- Contour following comb for speed and comfort
- SteelWave self-sharpening blades for precise results

Create the look you want

- 8 integrated length settings up to 21mm
- Short length comb to cut your hair to 1.6mm

PHILIPS
sense and simplicity

Specifications

Cutting system

- Cutter width: 41 mm
- Number of length settings: 8
- Range of length settings: up to 21 mm
- Precision (size of steps): by 3 mm
- Self-sharpening stainless steel blades
- Cutting element: Stainless steel blades

Ease of use

- Charging indicator: 1 LED
- Maintenance free - No Oil need

Power system

- Charging time: 8 hours, 12 hours

- Running time: 35 minutes, 50 minutes
- Usage: Corded/cordless

Design

- Shape: Ergonomic

Accessories

- Cleaning brush
- Barber tools: Styling comb & scissors

Service

- 2-year worldwide guarantee

QC5050/00

Highlights

8 integrated length settings



Select and locks your desired length within a versatile range of possible lengths.

Contour following comb



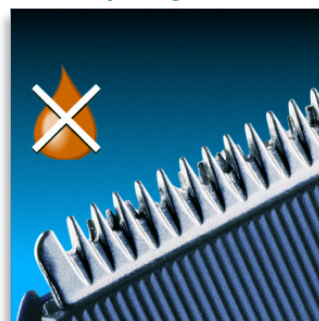
The contour following comb adjusts to every curve to give fast and comfortable results.

Short length comb



A dedicated comb to cut your head hair for an extra short hair style.

Self-sharpening blades



Revolutionary wave-shaped, self-sharpening blades channel and cut hair for a precise and even result.



Issue date 2012-02-25

Version: 9.2.1

12 NC: 0000 000 00000

© 2012 Koninklijke Philips Electronics N.V.
All Rights reserved.

Specifications are subject to change without notice.
Trademarks are the property of Koninklijke Philips
Electronics N.V. or their respective owners.

www.philips.com