

PHILIPS

Airstyler

800W

Ceramic

3 attachments

HP4671/00



Everyday the style you desire

Salon Airstylist Ceramic

Going out or staying in, use the three styling attachments of the Salon Airstylist Ceramic to create the hair style you want. 800W plus the airstyler's ceramic coating brings professional styling within easy reach.

Beautifully styled hair

- 800W for professional results
- Retractable bristle brush for easy curling
- Natural bristle brush for volume and extra shiny hair
- Shaping brush for easy shiny styles

Less Hair Damage

- Ceramic coated brushes for more care
- Cold air setting for gentle drying

Easy to use

- Three flexible settings for more control
- Swivel cord to prevent tangled wires
- Easy storage hook for convenient storage
- 1.8 m power cord

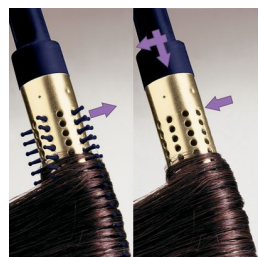
Highlights

800W



This airstyler has a 800W heater that creates the optimum level of airflow and gentle drying power.

Retractable bristle brush



This easy to use airstyler is both a styling brush and curler in one. The bristles retract into the brush at the touch of a button, so you can easily slide the styler out of your hair. What's left is a beautiful bouncy curl.

Natural bristle brush



The natural hairs in this bristle brush gently smoothen the hair cuticles to give that extra shine to your hair.

Shaping brush



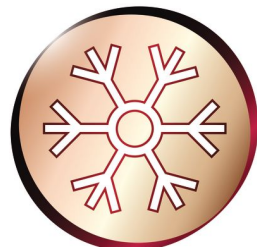
Brush and dry your hair at the same time with this easy to use attachment. The brush combined with the directed airflow will leave your hair smooth and shiny.

Three flexible settings



The speed and heat required can be easily adjusted to create the perfect end result. Three flexible settings ensure precise and tailored styling.

Cold air setting



A cold air setting is a low heat setting that gently dries the hair to minimize damage. This function is suitable for all hair types, but especially for fine, dry or damaged hair. It is a perfect setting for the hot summer season!

Easy storage hook



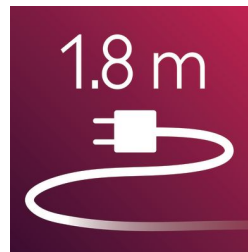
The rubberised hook is located at the base of the handle and provides another storage option, particularly convenient for use in the home or when staying at a hotel.

Swivel cord



Useful swivel cord technology rotates the cord to prevent tangled wires.

1.8 m cord



1.8 m power cord

Specifications

Technical specifications

Wattage: 800 W

Cord length: 2.2 m

Color/finishing: gold and dark blue

Features

Ceramic coating

Swivel cord

Hanging loop

Settings: 3 heat/speed settings

Attachments

Shaping brush

Retractable bristle brush

Natural mixed bristle brush

Service

2-year guarantee

Hair type

End result: Multi-styles

Hair length: Medium, Long

Hair thickness: Thin, Medium, Thick

