

PHILIPS

Compact Care Hair dryer

1000W

2 flexible speed settings



HP8110



Easy care for your hair

The hair dryer with compact size and nice design, quickly dry your hair.

Easy to use

- Compact design for easy handling
- Easy storage hook for convenient storage

Less hair damage

- 2 flexible speed settings for careful drying

Beautifully styled hair

- 1000 W for beautiful results
- Concentrator focuses the airflow



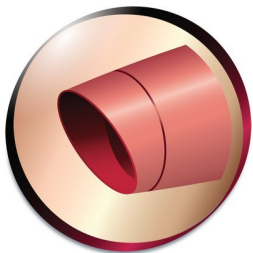
Highlights

2 flexible speed settings



This compact hair dryer offers you 2 pre-selected heat & speed combinations for an easy, quick and caring blow dry.

Concentrator



The concentrator works by focusing the flow of air through the opening onto specific areas. This results in a more precise styling and quick drying.

Easy storage hook



The rubberised hook is located at the base of the handle and provides another storage option, particularly convenient for use in the home or when staying at a hotel.

1000 W



This 1000W hairdryer creates the optimum level of airflow and gentle drying power, for beautiful results every day.

Compact design



Compact and ergonomic, this hairdryer benefits from a clever modern design. This results in a dryer that is light and easy to handle yet small enough to store virtually anywhere.

Specifications

Technical specifications

Wattage: 1000 W
Cord length: 1.5 m
Voltage: 220 V

Features

Storage hook
Hanging loop

Service

2-year guarantee

Accessories

Attachments: Nozzle

Design

Color: Light Blue



asimpleswitch.com

Philips Green Logo

Philips Green Products can reduce costs, energy consumption and CO2 emissions. How? They offer a significant environmental improvement in one or more of the Philips Green Focal Areas – Energy efficiency, Packaging, Hazardous substances, Weight, Recycling and disposal and Lifetime reliability.