

# PHILIPS

## Shaving unit

Shaver series 7000  
SensoTouch

DualPrecision blades

Replacement unit

Fits SensoTouch 2D (RQ11xx)

RQ11/51



## Keep a close shave

Change heads every 2 years for best results

Within two years your shaver heads cut 9 million hairs on your face. Replace the shaver heads and get back to 100% performance.

### Compatibility

- Replacement heads for SensoTouch 2D shavers

### Follows the unique contours of your face

- GyroFlex 2D system adjusts easily to the curve

### Sensationally smooth shave

- Shavers with Super Lift&Cut Action

### An electric shaver which takes care of your skin

- Aquatec seal for comfortable dry & refreshing wet shaves
- Smooth, low-friction SkinGlide to minimize irritation

### Simple replacement

- Easy click off, click on

# Highlights

# Specifications

## Compatible with SensoTouch 2D



RQ11 replacement heads is compatible with SensoTouch 2D (RQ11xx) shavers.

## GyroFlex 2D



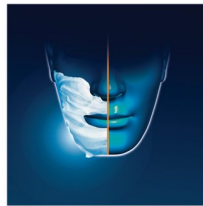
GyroFlex 2D contour-following system of the shaver adjusts easily to the curves of your face, minimizing pressure and irritation for a close shave.

## Super Lift & Cut Action



The dual blade system built into the Philips electric shaver lifts hairs to cut comfortably below skin level for a closer shave.

## Aquatec



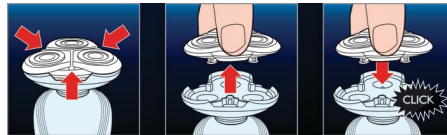
The Aquatec wet & dry seal of the electric shaver lets you choose how you prefer to shave. You can get a comfortable dry shave or a refreshing wet shave using a shaving gel or foam for extra skin comfort.

## SkinGlide



The low-friction SkinGlide shaving surface of the electric shaver slides smoothly along your skin for a close easy shave.

## Easy click off, click on



Simply pop the head of your Philips shaver open and use the included cleaning brush to sweep away the loose hairs.

## Shaving heads

Fits product type: SensoTouch 2D (RQ11xx)  
Shaving units per packaging: 1

