

# PHILIPS

## NORELCO

### Shaving unit

### SensoTouch

#### Senso Touch 2D



RQ11



## Keep a close shave

Change heads every 12 months for best results

Every year your blades travel the height of Mt. Everest...49 times! After such a workout, even the best materials can lose their edge. Retain your razor's peak performance — replace the heads every 12 months.

#### **Sensationally smooth shave**

- SensoTouch Shavers with Super Lift&Cut Action

#### **Follows the unique contours of your face**

- GyroFlex 2D system adjusts easily to the curve

#### **An electric shaver that takes care of your skin**

- Aquatec seal for comfortable dry shaves and refreshing wet shaves
- Smooth, low-friction SkinGlide to minimise irritation

#### **Simple replacement**

- Easy click off, click on

# Highlights

## Super Lift & Cut Action



The dual-blade system built into our electric shaver lifts hairs to cut comfortably below skin level for a closer shave.

## GyroFlex 2D



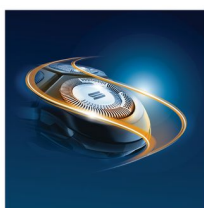
GyroFlex 2D contour-following system adjusts easily to the curves of your face, minimising pressure and irritation for a close shave.

## Aquatec



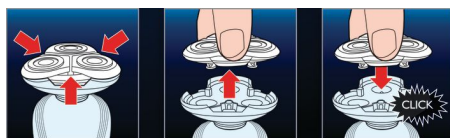
The Aquatec wet and dry seal lets you choose how you prefer to shave. You can get a comfortable dry shave or a refreshing wet shave using a shaving gel or foam for extra skin comfort.

## SkinGlide



The low-friction SkinGlide shaving surface slides smoothly along your skin for a close, easy shave.

## Easy click off, click on



Easily renew your shaving unit using our click off, click on system.

# Specifications

## Shaving heads

Fits product types: 1150X, 1160X, 1170X, 1180X

Shaving units per packaging: 1

