

# PHILIPS

## Hairdryer

ThermoProtect

2300W

4x Ionic



HP8236/00



### Fast dry at a lower temperature with ThermoProtect

with massaging diffuser & 11mm styling nozzle.

Protect your hair while enjoying fast drying results. This hair dryer has multiple speed and temperature settings. Features include ThermoProtect for fast drying at a constant caring temperature, Ionic Care & TurboBoost.

#### Beautifully styled hair

- 2300W of fast, high performance drying power
- Cool Shot sets your style
- Maximizes volume & boosts curls while gently massaging scalp
- Six flexible speed and temperature settings for full control
- Ultra slim styling nozzle of 11mm for precision styling
- Turbo boost for extra fast drying

#### Less Hair Damage

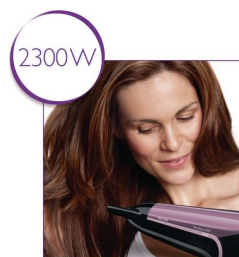
- More Care with ceramic elements, providing far infrared heat
- ThermoProtect temperature setting
- Ionic conditioning for shiny, frizz-free hair

#### Easy to use

- Easy storage hook for convenient storage
- 1.8 m power cord
- Elegant, feminine design emphasising performance and quality

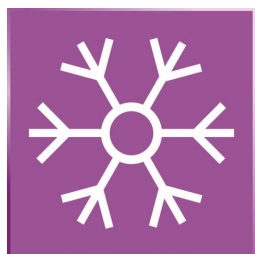
# Highlights

## 2300W of power



This 2300W professional hair dryer creates a powerful airflow. The resulting combination of power and speed makes drying and styling your hair quicker and easier.

## Cool Shot



A must-have professional function for hair stylists. The Cool Shot button provides an intense burst of cold air. It is used after styling to finish and set the style.

## Easy storage hook



The rubberised hook is located at the base of the handle and provides another storage option, particularly convenient for use in the home or when staying at a hotel.

## ThermoProtect temperature



The ThermoProtect temperature provides the optimal drying temperature and gives additional protection from overheating the hair. With the same powerful airflow, you will get the best results in a caring way.

## 1.8 m cord

Convenient to use thanks to the 1.8m power cord length.

## Asymmetric massaging diffuser

The asymmetric massaging diffuser has a unique asymmetric design that is contoured to the head, making it easier and more intuitive to use. The diffuser spreads the flow of air across the hair, drying hair more healthy, boosting volume and reducing frizz while the addition of massage helps stimulate the scalp and improve hair vitality. For best results, hold close to the crown and root area and let the diffuser's massaging textured pins encourage volume, add bounce and shape curls.

## More care with Ceramic element

The ceramic element issues far infrared heat, which has a gentle warmth that helps dry your hair from within and protects it from overdrying, without compromising on speed and effectiveness.

## Premium Design

This hairdryer embodies a modern, sophisticated approach to design. Soft, fluid contours and elongated proportions subtly communicate femininity while precision detailing and high quality materials and finishes are evidence of the product's superior performance.

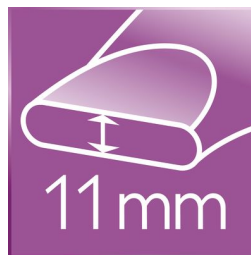
## Removeable air inlet filter

The removeable air flow filter of your hairdryer is easy to maintain. Simply click off to clean. Doing this regularly will prevent build up of dust and hair that can affect drying performance.

## Speed and temperature settings

The speed and heat required can be easily adjusted to create the perfect style. Six different settings ensure full control for precise and tailored styling.

## Ultra slim styling 11mm nozzle



The ultra thin styling nozzle concentrates the flow of hair through the 11mm nozzle for precision styling on specific areas. Great for touch ups or to set your style.

## Ionic conditioning



Give your hair instant care with ionic conditioning. Charged negative ions eliminate static, condition your hair, and smooth the hair cuticles to intensify hair's shine and glossiness. The result is smooth and frizz-free hair with beautiful shine.

## Turbo boost

The turbo boost button increases the airflow, to dry your hair even quicker.

# Specifications

**Technical specifications**

**Voltage:** 220-240 V

**Frequency:** 50-60 Hz

**Wattage:** 2200 W

**Power:** 2300 W

**Color/finishing:** Glossy Black & Purple gradient

**Housing material:** PC

**Motor:** DC Motor

**Cord length:** 1.8 m

**Features**

**Foldable handle:** No

**Cool shot**

**Dual voltage:** No

**Travel pouch:** No

**Ceramic coating:** Ceramic Element

**Ion conditioning**

**Hanging loop**

**Diffuser:** Massaging volume diffuser

**Nozzle / Concentrator:** Ultra slim styling 11mm nozzle

**Number of attachments:** 2

**Turbo Boost**

**Service**

**2-year guarantee**

**Weight & dimensions**

**A-Box Dimensions:** Length = 63cm, Width = 35cm, Height = 25cm

**A-Box Weight:** 6.3kg

**F-Box Dimensions:** Depth = 11cm, Height = 23cm, Width = 31cm

**F-Box weight:** 1kg

**Product size:** Width = 22cm, Height = 31cm, Length = 10cm

**Product weight (excl. pack):** 0.6kg

