

# PHILIPS

## Multi-Styler

## StyleCare

15+ styles in a box

15 attachments & accessories

Style Guide

OneClick Technology



BHH822/05



## More styles on demand

15 attachments and style guide for various looks

Every day a different look! From perfectly polished, straight, volumized, curly hair to updos and more, create more than 15 styles with the new Philips Multi-Styler with style guide.

### Beautifully styled hair

- 80mm straightener for sleek results
- 25mm curling barrel for tight to loose curls
- 32mm hot brush for luxurious volume
- Style guide and 11 useful hair accessories for 15+ styles

### Ease of use

- OneClick Technology for quick and easy attachment changing
- 160°C to 210°C styling temperature settings
- Fast heat up time, ready to use in 45 sec
- LED indicator for styling with optimal temperature
- Auto shut-off for safe usage
- 1.8 m power cord
- Swivel cord to prevent tangled wires

### Care for your hair

- Protective ceramic coating

# Highlights

## Straightener for sleek results



80mm straightening plates for perfect sleek results.

## Curler for fabulous curls



25mm curling barrel for perfect tight to loose curls.

## Hot brush for luxurious volume



Simply brush your hair for creating perfectly voluminous results.

## 11 versatile hair accessories



Including a style guide and all accessories you need to create 15+ styles! The style kit includes 2 elastic bands, 4 elastic mini

scrunchies, a hair clip and 4 bobby pins, a comb and 2 spiral grips for easy hairstyling. A hair loop, pull hair pin, hair grip, banana clip and a side comb will enable you to experiment and create fabulous styles!

## OneClick release technology



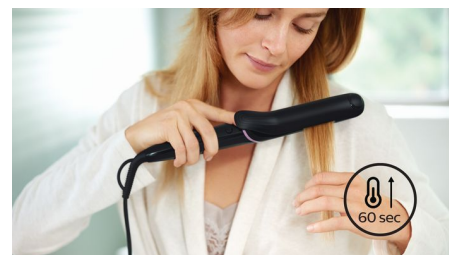
Changing attachments has never been quicker or easier with the multi-styler's OneClick design. Simply click on and push the button, holding the cool tip, to release.

## 2 temperature settings



2 temperature settings for perfect results. Choose from a professional high temperatures for straightening to achieve long lasting results while caring for your hair.

## Fast heat up time



This styler has a fast heat up time, being ready to use in 45 seconds.

## Ready to style indicator



The ready to use indicator shows when the styler has reached the right temperature. The soft, white LED light changes from a soft pulse to constant to easily show when it's ready for use.

## Gentle on your hair



Protective ceramic coating ensures even heat distribution and less hair damage for shiny and soft hair.

## Auto shut-off



This styler has been equipped with an automatic shut-off feature. This feature has been designed to provide peace of mind. If left on, the appliance will automatically switch off after 60 min.

# Specifications

## Attachments

Curler  
Straightener  
Hot brush

## Accessories

Style guide: with 15 easy to create styles  
Elastic band: 2  
Hair loop  
Hair clips  
Hair pins: 4  
Banana clip  
Elastic mini scrunchy: 4  
Spiral grip: 2  
Comb

Hair grip  
Pull hair pin  
Side comb

## Features

Coating of heated parts: Ceramic  
Barrel diameter: Curler 25 mm  
Barrel diameter: Heated brush 32mm  
Straightener size: 30x80 mm  
Cool tip  
Swivel cord  
Storage hook  
OneClick release technology

## Technical specifications

Heat settings: 2  
Styling temperature: 180°C - 210°C  
Heater type: PTC  
Heat-up time: 45 sec  
Cable length: 1.8 m  
Plate size: Curler 90 mm, Heated brush 90 mm  
Voltage: 110-240V

## Service

2-year worldwide guarantee

