

PHILIPS

Shaving unit

Flex and Pivot Action

RQ10



Keep a close shave

Change heads every 2 years for the best results

Every year your blades travel the height of Mt. Everest... 49 times! After such a workout, even the best materials can lose their edge. Retain your shaver's peak performance — replace heads every 2 years.

Comfortably close

- Super Lift & Cut shaving technology with dual blade system

Perfectly close, even on the neck

- Flex and Pivot Action follows every curve

Simple replacement

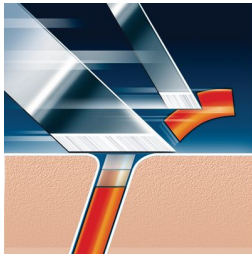
- Easy click off, click on

A fast and close shave

- Triple-Track shaving heads with 50% more shaving surface

Highlights

Super Lift & Cut technology



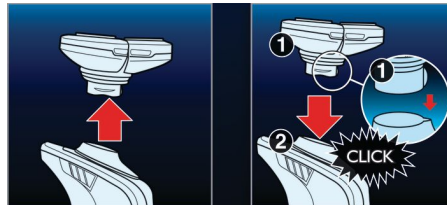
Dual blade system: first blade lifts, second blade cuts for a comfortable close shave.

Flex and Pivot Action



Three independently flexing heads in a shaving unit that swivels with full range of motion. This unique combination ensures optimum skin contact in curved areas to catch even the most problematic neck hair.

Easy click off, click on



Easily renew your shaving unit using our click off, click on system.

Triple-Track shaving heads



The three shaving tracks of the Triple-Track shaving heads offer 50% more shaving surface than standard, single track rotary shaving heads.

Specifications

Shaving heads

Fits product types: RQ1050, RQ1060, RQ1075, RQ1085, RQ1095, RQ1051, RQ1052, RQ1053, RQ1061, RQ1062, RQ1076, RQ1077, RQ1087, RQ1090

Shaving units per packaging: 1

