

PHILIPS

Hairdryer

ThermoProtect Ionic

2200W

4x Ionic Care



HP8235/09



Fast dry at a lower temperature with
ThermoProtect
with volume diffuser & 14mm styling nozzle.

Protect your hair while enjoying fast drying results. Multiple speed and temperature settings give the blow dry you want. Features include ThermoProtect for fast drying at a constant caring temperature, Ionic Care & TurboBoost.

Beautifully styled hair

- Professional 2200W for perfect salon results
- Adds volume, maximising thickness, curls and bouncy styles
- Six flexible speed and temperature settings for full control
- Cool Shot sets your style
- Perfect styling results with a slim styling nozzle

Less Hair Damage

- 4 x stronger Ion conditioning for ultimate shine
- ThermoProtect temperature setting

Easy to use

- Removeable air flow filter makes cleaning quick and easy
- 1.8 m power cord
- Easy storage hook for convenient storage

Highlights

ThermoProtect temperature



The ThermoProtect temperature provides the optimal drying temperature and gives additional protection from overheating the hair. With the same powerful airflow, you will get the best results in a caring way.

Professional 2200W



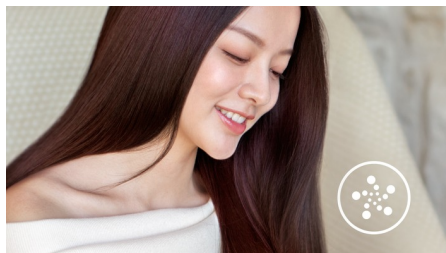
This 2200W professional hairdryer creates a powerful airflow. The resulting combination of power and speed makes drying and styling your hair quicker and easier.

Speed and temperature settings



The speed and heat required can be easily adjusted to create the perfect style. Six different settings ensure full control for precise and tailored styling.

Ion conditioning 4 x more



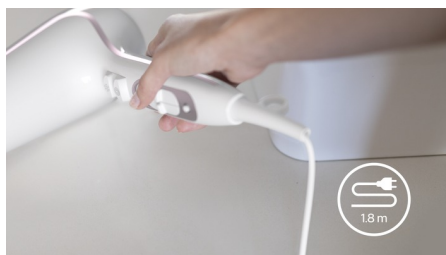
Give your hair an intensive boost with ionic conditioning. This hairdryer emits 4 x more negatively charged ions than other hairdryers. This ultimate stream of ions eliminates more static, conditions the hair and smooths down the hair cuticles. The result is ultimate shiny, frizz-free hair. Let it shine!

Cool Shot



A must-have professional function for hair stylists. The Cool Shot button provides an intense burst of cold air. It is used after styling to finish and set the style.

1.8 m cord



Convenient to use thanks to the 1.8m power cord length.

Asymmetric volume diffuser



The volume diffuser has a unique asymmetric design that is contoured to the head, making it easier and more intuitive to use. The diffuser also spreads the flow of air across the hair, drying hair more healthily, boosting volume and reducing frizz. For best results, hold close to the crown and root area and let the diffuser's fine textured pins encourage volume, add bounce and shape curls.

Easy storage hook



The rubberised hook is located at the base of the handle and provides another storage option, particularly convenient for use in the home or when staying at a hotel.

Removeable air inlet filter

The removeable air flow filter of your hairdryer is easy to maintain. Simply click off to clean. Doing this regularly will prevent build up of dust and hair that can affect drying performance.

Slim styling nozzle



Perfect styling results and a shiny, polished look with a slim styling nozzle for precise styling.

Specifications

Technical specifications

Voltage: 220 V

Frequency: 60 Hz

Power: 2200 W

Color/finishing: High Gloss & White

Housing material: ABS

Motor: DC Motor

Cord length: 1.8 m

Features

Cool shot

Dual voltage: No

Hanging loop

Diffuser: Asymmetric volume diffuser

Nozzle / Concentrator: Slim styling 14mm nozzle

Number of attachments: 2

Service

2-year guarantee

Caring technologies

4x Ion technology

