



Philips Multigroom
Grooming kit

Multigroom

QG3280



Head to toe style

With Bodygroom and lithium-ion battery power

Designed to create any style you want with excellent precision, giving you that sense of pride of a perfect end result.

Best performance that feels great

- Sharper edges for improved cutting performance
- The Rounded Guard is more gentle and glides better on the skin
- Quick charge and long-lasting battery performance

Provides maximum ease of use

- 100% waterproof for shower use and easy cleaning

Create the look you want

- Full size trimmer for beard and head hair
- Mini shaver for finishing edges with a close shave result
- Precision detail trimmer to create and maintain your lines
- Hair clipper comb locks into 9 settings
- Bodycomb with 5 length settings
- Trim and shave all body zones
- Nose, ear and eyebrow trimmer
- Beard and moustache comb locks into 9 settings

PHILIPS

NORELCO

sense **and** simplicity

Highlights

Full size trimmer



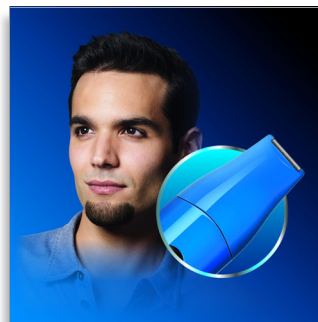
Using the full size trimmer without a comb results in a stubble beard look.

9 position beard and moustache comb



9 length settings to trim your facial hair exactly as you want.

Mini shaver



To finish your beard style, enjoy the use of the mini shaver, which finishes edges with a close shave result.

Precision detail trimmer



Create any style you want with precision.

9 position hair clipper comb



9 length settings to keep your hair neat and styled.

Nose, ear and eyebrow trimmer



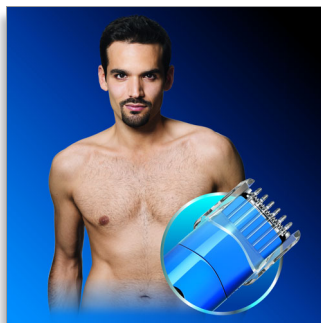
To trim unwanted hairs in an easy and pain-free way.

Bodygroom shaver



Trim and shave all body zones with this skin protection shaver made of hypo-allergenic materials, to keep your body hair under control with less skin irritation

5-position body comb



Body trimmer comb with 5 length settings to trim body hair to the desired length

Lithium ion battery
quick charge and long-lasting battery performance

100% waterproof



100% waterproof for easy use and cleaning.

New sharper edges

Sharper edges provide an improved cutting performance for faster and better results



Specifications

Ease of use

- Wet and Dry: 100 % waterproof for easy use and cleaning, Washable attachments

Power system

- Battery type: Li-Ion
- Charging time: 1 hour
- Running time: 50 minutes
- Usage: Cordless only
- Worldwide voltage: 100-240 V

Accessories

- Charging stand
- Storage pouch

Create the look you want

- Styling tools: Body comb, 9 position hair clipper comb, Beard and moustache comb
- Number of length settings: 9 secured length settings

Attachments

- Full size trimmer blade
- Mini shaver
- Precision trimmer: 21 mm
- Body shaver
- Nose, ear and eyebrow trimmer

Maintenance

- Guarantee: 2-year worldwide guarantee
- Lubrication: Blades need no oiling



Issue date 2012-02-25

Version: 11.2.1

© 2012 Koninklijke Philips Electronics N.V.
All Rights reserved.

Specifications are subject to change without notice.
Trademarks are the property of Koninklijke Philips
Electronics N.V. or their respective owners.

www.philips.com