

# PHILIPS

Wet and dry electric shaver

Shaver series 9000

V-Track blade system PRO

8-direction  
ContourDetectHeads

SmartClick beard styler



S9711/41



## Perfection in every pass

Cuts up to 20% more hair\* in a single pass

The Shaver 9000 is our most advanced shaver yet. The unique contour detect technology offers exceptionally coverage over every contour of your face, and the V-Track system guides hairs into the best cutting position for the closest result.

### Designed for perfection

- Our best shaving system on 1-3 day beard
- Heads flex in 8 different directions for a superb result

### A comfortable shave

- Personalize your shave by choosing between three settings
- Get a comfortable dry or refreshing wet shave with Aquatec

### Easy to use

- Intuitive icons make the functions easy to use
- Shaver can be rinsed clean under the tap
- With 2 year guarantee
- 60 minutes cordless shaving after a one-hour charge

### Get the most of your shaver

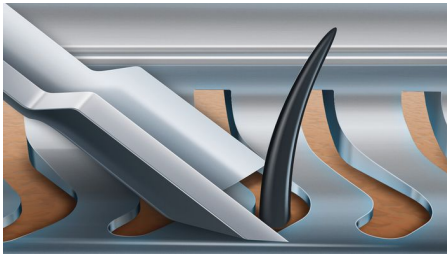
- Click-on beard styler with 5 length settings



[asimpleswitch.com](http://asimpleswitch.com)

# Highlights

## V-Track blade system PRO



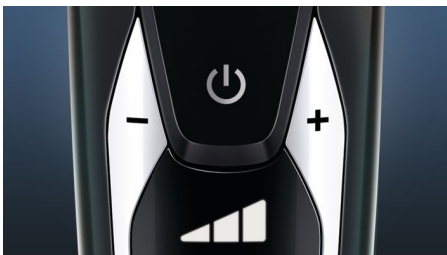
Get the perfect close shave. The V-Track Precision PRO Blades gently position each hair in the best cutting position, from 1 day up to 3 day beard and even the flat laying and different length of hairs. Cuts 30% closer\* in less strokes leaving your skin in great condition.

## 8-direction ContourDetectHeads



Follow every contour of your face and neck with 8-directional ContourDetect heads. You'll catch 20% more hairs with every pass. Resulting in an extremely close, smooth shave.

## Personal comfort settings



Choose between 3 modes to customize your shave: Sensitive – for a gentle, yet thorough shave. Normal – for a thorough, everyday shave. Fast – for a quick shave that saves you time.

## Aquatec Wet & Dry



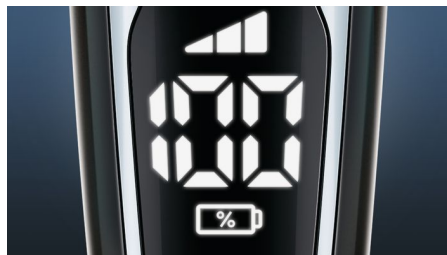
Choose how you prefer to shave. With the Aquatec Wet & Dry seal, you can opt for a quick yet comfortable dry shave. Or you can shave wet – with gel or foam – even under the shower.

## SmartClick beard styler



Change your look with the SmartClick Beard Styler attachment. Choose from 5 length settings to create anything from a perfect stubble look to a short, neatly trimmed beard. Rounded tips and combs are designed to prevent skin irritation.

## Digital display



The intuitive display shows relevant information, enabling you to get the best performance out of your shaver: – 3 digit (%) battery indicator – Cleaning Indicator – Battery Low Indicator – Replacement Head Indicator – Travel Lock Indicator

## 60 minutes of cordless shaving



Now with the most superior battery life of all Philips Shavers, the charging system gives you two convenient options: 60 minutes of running time after a single one-hour charge, or quick charge for one full shave. All Shaver series 9000 models are designed to operate only in cordless mode to ensure safety in wet environments.

## Fully washable shaver



Simply open the shaver head to rinse it thoroughly under the tap.



[asimpleswitch.com](https://www.asimpleswitch.com)

## Philips Green Logo

Philips Green Products can reduce costs, energy consumption and CO2 emissions. How? They offer a significant environmental improvement in one or more of the Philips Green Focal Areas – Energy efficiency, Packaging, Hazardous substances, Weight, Recycling and disposal and Lifetime reliability.

# Specifications

## Shaving Performance

**Shaving system:** V-Track blade system PRO

**Contour following:** 8-direction

ContourDetectHeads

**SkinComfort:** AquaTec Wet & Dry

**Personal Comfort Settings:** Sensitive-Normal-Fast settings

## Accessories

**SmartClick:** Beard styler

**Pouch:** Travel pouch

## Power

**Battery Type:** Lithium-ion

**Run time:** 60 min / 20 shaves

**Charging:** 1 hour full charge, Quick charge for 1 shave

**Automatic voltage:** 100-240 V

**Stand-by power:** 0.1 W

**Max power consumption:** 9 W

## Ease of use

**Display:** % Battery Level Indicator, Battery low indicator, Cleaning indicator, Replace shaving heads indicator, Travel lock indicator

**Cleaning:** Fully washable

## Design

**Color:** Brushed chrome

**Handle:** Ergonomic grip & handling

## Service

**2-year guarantee**

**Replacement head:** Replace every 2 yrs with SH90

## Software

**Software update:** Philips offers relevant software updates for a period of 2 years after the date of purchase

