

Philips  
Straightener

**SalonStraight**  
Straight and Curl

**HP8300**



## Professional results in a convenient way

### SalonStraight Petite

Straighten your way. The easy-to-use yet highly effective Simply SalonStraight has ceramic straightening plates and operates at a professional styling temperature of 180°C.

#### **Beautifully styled hair**

- Ceramic plates for smooth gliding and shiny hair
- 180°C temperature for beautiful results

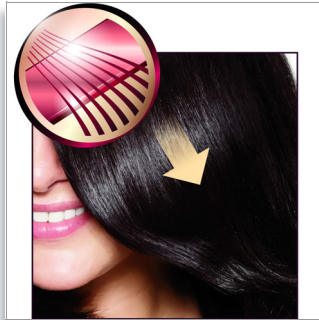
#### **Ease of use**

- Fast heat-up time, ready to use in 60 seconds
- Easy lock for convenient storage
- Easy storage hook for convenient storage
- Swivel cord to prevent tangled wires
- 1.8 m power cord
- Compact design for easy handling
- Universal voltage

**PHILIPS**  
sense and simplicity

## Highlights

### Ceramic plates



Ceramic is microscopically smooth and durable by nature, and is therefore one of the best materials for straightening plates. The plates glide effortlessly through your hair, giving you perfect shiny hair.

### Instant heat up



The straightener has a fast heat-up time, being ready to use in 60 seconds

### Easy lock



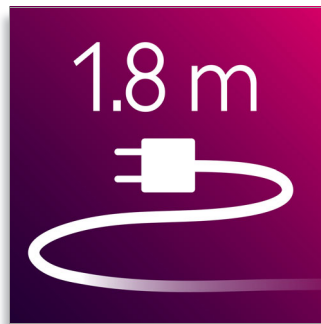
Easy lock for convenient storage

### Swivel cord



Useful swivel cord technology rotates the cord to prevent tangled wires.

### 1.8 m cord



1.8 m power cord

### Compact design



Compact and ergonomic, this hairdryer benefits from a clever modern design. This results in a dryer that is light and easy to handle yet small enough to store virtually anywhere.

## Specifications

### Technical specifications

- Voltage: 110-240 V
- Heating time: 60
- Cord length: 1.8 m
- Maximum temperature: 180 °C

### Hair type

- End result: Straight
- Hair length: Medium, Short
- Hair thickness: Thin, Thick, Medium

### Features

- Swivel cord

### Service

- 2-year worldwide guarantee

