



Philips  
Curler

- SalonCurl Essential
- 16 mm

HP4657/00

## Simply shiny curl

### SalonCurl Essential curling iron

The essential curling iron for tight curls and ringlets

#### Beautifully styled hair

- 16 mm barrel for tight curls and ringlets
- 180°C temperature for beautiful results

#### Ease of use

- Ready for use indicator
- Fast heat up time, ready to use in 60 seconds
- On/off indication light
- Cool tip for easier and safer use
- Swivel cord to prevent tangled wires
- 1.8 m power cord
- Universal voltage

**PHILIPS**

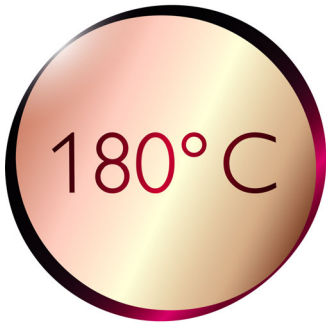
## Highlights

### 16 mm barrel



With the barrel diameter of 16 mm you can create curls and ringlets for a joyful and young look.

### 180°C temperature



This high temperature enables you change the shape of your hair, and gives you that perfect look like you've just come from the salon.

### Instant heat up



The curler has a fast heat up time, being ready to use in 60 seconds.

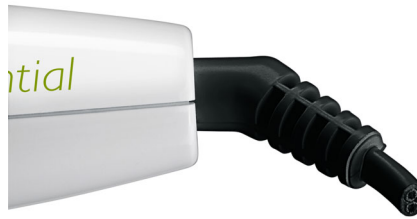
### On/off indication light On/off indication light

### Cool tip



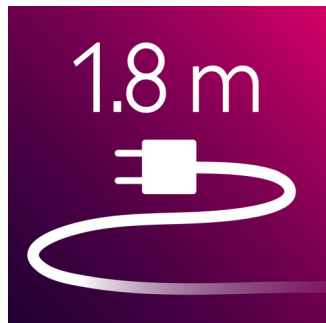
The tip of the styler is made from a special heat insulating material to keep it cool; you can safely hold it while you're styling for optimal ease of use.

### Swivel cord



Useful swivel cord technology rotates the cord to prevent tangled wires.

### 1.8 m cord



1.8 m power cord

## Specifications

### Technical specifications

- Maximum temperature: 180 °C
- Temperature range: one setting
- Heating time: 120s
- Color/finishing: white and lime green
- Cord length: 1.8 m
- Barrel diameter: 16 mm
- Heater type: PTC ceramic heater
- Voltage: worldwide

### Features

- Ready for use indicator
- Cool tip
- Swivel cord
- Hanging loop

### Hair type

- End result: Tight curls and ringlets
- Hair length: Medium, Long
- Hair thickness: Thick, Thin, Medium

### Service

- 2-year worldwide guarantee



Issue date 2013-05-18

Version: 12.2.1

12 NC: 0000 000 00000

© 2013 Koninklijke Philips N.V.  
All Rights reserved.

Specifications are subject to change without notice.  
Trademarks are the property of Koninklijke Philips N.V.  
or their respective owners.

[www.philips.com](http://www.philips.com)