

Philips SalonMultistylist  
Multi-Styler

HP4696/10



# Creative styles, constant care

## SalonSuper Stylist

Want to count the ways to get great styles? The SalonMultistylist 8 in 1 has eight versatile ceramic styling attachments. Perfect for creating all the styles you can think of...and more.

### Beautifully styled hair

- 3 styles: straight, big curls and waves
- Ceramic plates for smooth gliding and shiny hair
- Straightener attachment to create beautiful sleek hair
- Crimper for added texture
- Small curling tong for tight curls and ringlets
- Large curling tong for big curls
- Slide on brush for added volume and beautiful waves
- Slide-on spiral for beautiful ringlets

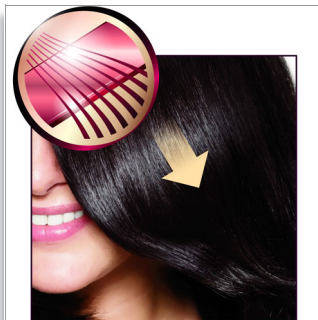
### Ease of use

- Cool tip for easier and safer use
- Ready-to-use indicator
- On/off indication light
- Safety stand for easy use
- Included: hairclips for easy styling

**PHILIPS**  
sense and simplicity

# Highlights

## Ceramic plates

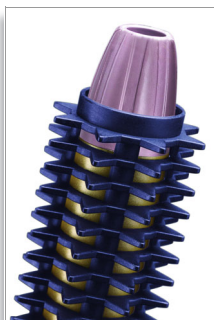


Ceramic is microscopically smooth and durable by nature, and is therefore one of the best materials for straightening plates. The plates glide effortlessly through your hair, giving you perfect shiny hair.

## Straightener attachment

The Ceramic plates glide effortlessly through your hair, giving you perfect straight and shiny hair.

## Slide-on brush



This attachment can be easily placed on tong to create additional volume and beautiful wavy styles.

## Slide-on spiral

Just follow the curves to create the most beautiful ringlets, it has never been so easy!

## Small curling tong

If you want to create tight curls or ringlets, you need to use a curling iron with a small diameter.

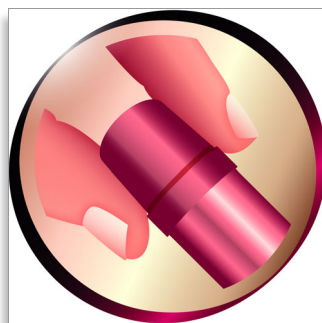
## Large curling tong

If you want to create beautiful curls or waves, you need this large curling attachment with a large sized diameter.

## Hairclips

Use the hairclips to make sections, this will help you to style all your hair easily.

## Cool tip



The tip of the styler is made from a special heat insulating material to keep it cool; you can safely hold it while you're styling for optimal ease of use.

## Ready-to-use indicator



This shows when the styler has reached the right temperature, so you can instantly see when you're ready to style.

## Heat resistant pouch

This Heat Resistant pouch is perfect for styling on the go. Forget waiting for your styler to cool down. Simply store using the heat resistant pouch included.

## Safety stand

The safety stand enables you to put the curler down safely during use.

## On/off indication light



On/off indication light

## Included: Brush

Use this high-quality brush to detangle and smooth the hair cuticles to give that extra shine to your hair.

## Crimper



This attachment gives your hair a great funky texture.

## 3 styles: straight, big curls



3 styles: straight, big curls and waves

# Specifications

## Technical specifications

- Power: 25 W
- Voltage: 100-240 V V
- Colour/finishing: Blue
- Cord length: 1.8 m
- Material housing: various

## Hair type

- Current hair style: Straight, Wavy, Curly
- End result: Multi-styles
- Hair length: Long, Medium
- Hair thickness: Thin

## Service

- 2-year worldwide guarantee



Issue date 2013-01-10

Version: 9.0.1

12 NC: 0000 000 00000

© 2013 Koninklijke Philips Electronics N.V.  
All Rights reserved.

Specifications are subject to change without notice.  
Trademarks are the property of Koninklijke Philips  
Electronics N.V. or their respective owners.

[www.philips.com](http://www.philips.com)