

# PHILIPS

## Hairdryer

2000W

HP4997/22



## The lightest AC dryer for salon result\*

### SalonDry Pro hair dryer

Want to dry and style your hair like the professionals? The SalonDry Pro – with 2000W of drying power coupled with a super lite AC motor – is the hair dryer you need if you're looking to recreate that salon style blow dry.

#### Less Hair Damage

- Ceramic element to smooth your hair
- Ion conditioning for shiny, frizz free hair

#### Easy to use

- Lightweight design for ergonomic use
- 2.5m cord

#### Beautifully styled hair

- Professional AC motor for 50% longer lifetime
- Six flexible speed and temperature settings for full control
- Professional 2000W for perfect salon results
- Volume diffuser enhances volume, for curls and bouncy styles
- Ultra narrow concentrator for precise styling
- Cool Shot sets your style

# Highlights

## Ceramic element



The ceramic element is included to prevent overdrying. It issues infrared heat, which has a gentle warmth which helps dries your hair from within and protects it from overdrying, without compromising on speed and effectiveness.

## Ion conditioning



Give your hair an instant boost with ionic conditioning. Charged negative ions eliminate static, condition the hair and smooth down the hair cuticles to intensify the hair's shine and glossiness. The result is hair that is beautifully shiny, smooth and frizz-free.

## Professional AC motor



This type of motor is specially developed for the professional market and brings you several benefits. Most important, it has a longer lifespan than usual motors which lengthens the lifetime your hairdryer by 50%. On top of this, it also has an extra powerful airflow for fast and effective drying.

## Six flexible speed and temperature settings



The speed and heat required can be easily adjusted to create the perfect style. Six different settings ensure full control for precise and tailored styling.

## Ultra narrow concentrator 15mm

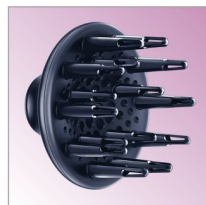
The concentrator works by directing the flow of air through the ultra narrow opening on to specific areas. This results in very precise styling and is great for touch ups or to finish a style.

## Professional 2000W



This 2000W professional hairdryer creates a powerful airflow. The resulting combination of power and speed makes drying and styling your hair quicker and easier.

## Volume diffuser



Volume diffuser enhances volume, for curls and bouncy styles

## Lightweight design



This new design doesn't just look it. Lightweight and ergonomic, the hairdryer is easier to handle and results in improved styling flexibility.

## 2.5m cord



The longer length results in improved flexibility and ease of handling, so you can use it anywhere you want.

## Cool Shot



A must-have professional function for hair stylists. The Cool Shot button provides an intense burst of cold air. It is used after styling to finish and set the style.

# Specifications

## Technical specifications

Wattage: 2000 W

Cord length: 2.5 m

Material housing: soft touch

## Serviceability

Replacement

