

# PHILIPS

## NORELCO

Powerful precision  
beard styler

GoStyler

DualCut beard trimmer

Detail shaver attachment

Fully washable, AA battery

3 precision beard combs



FS9185/42



## High performance, precise edges & contours DualCut technology for a fast and powerful trim

The Philips Norelco GoStyler gives power and precision to trim, shape & shave facial hair. Trim & shape your beard evenly with the advanced DualCut trimmer & 3 precision combs. Define precise lines, edges & contours with the detail shaver.

### Trim with maximum power

- Double-sharpened cutting element for perfect edging
- Trim & shape stubble, goatee, sideburns, neckline, mustache

### Shape, edge, define precise lines with comfort

- Rounded tips ensure a smooth glide on the skin
- Detail shaver for perfect lines, edges & contours
- 1, 3, 5mm (1/32", 1/8", 3/16") combs for maintaining a stubb

### Easy to use

- Water resistant for use in the shower & easy cleaning
- AA battery included
- Rubber grip for easy hold, even when wet
- Brush for easy cleaning of the precision trimmer

### Built to last

- The blades never need to be oiled
- 2-year warranty



asimpleswitch.com

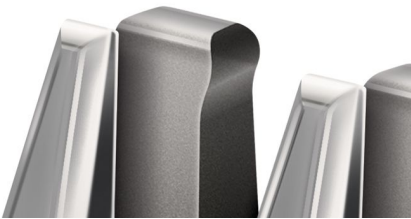
# Highlights

## DualCut Technology



Advanced DualCut Technology combines a double-sharpened cutting element with low-friction engineering. The innovative cutting element is designed to cut hair sharper and faster than predecessor.

## Rounded tips



The cutting element has specially rounded tips to prevent skin irritations and ensure a smooth, comfortable trim.

## DualCut precision trimmer



The 21mm (13/16") precision trimmer helps you trim & shape your facial style (stubble, goatee, sideburns, neckline or mustache) with high control and visibility.

## 3 precision combs



Maintain the uniform length of your stubble, goatee and mustache with the 1mm, 3mm, and 5mm (1/32", 1/8" and 3/16") click-on precision combs.

## Skin-friendly detail shaver



Define the edges of your style with the click-on 21mm (13/16") detail shaver. The detail foil shaver is designed to fit into tight spaces with more precision than a blade, so nothing gets in the way of your perfect style.

## Water resistant



The trimmer and the combs are Water resistant and easy to clean under the faucet after each use.

## AA battery included



Your trimmer is ready to use straight away.

## Soft rubber grip



The soft-touch rubber grip gives you the best hold, even when wet, for better control when operating your trimmer.

## Brush



The brush keeps the blade clean after use.



[asimpleswitch.com](http://asimpleswitch.com)

## Philips Green Logo

Philips Green Products can reduce costs, energy consumption and CO2 emissions. How? They offer a significant environmental improvement in one or more of the Philips Green Focal Areas – Energy efficiency, Packaging, Hazardous substances, Weight, Recycling and disposal and Lifetime reliability.

# Specifications

## Cutting system

Cutter width detail trimmer: 21mm (13/16")

Detail foil shaver: 21mm (13/16")

Cutting element: Stainless steel blades

Number of length settings: 4

3 precision beard combs: 1, 3, 5mm (1/32", 1/8", 3/16")

## Accessories

Maintenance: Cleaning brush

## Ease of use

Maintenance free: No oil needed

Cleaning: Fully washable

## Design

Color: Black and red

Finishing: Plastic and rubber

## Power

Power supply: AA battery

## Service

2-year worldwide warranty

