

PHILIPS

Dryer

DryCare Advanced

ThermoBalance sensor

Ionic

2200W



BHD186/00



Active heat protection, for 22% more shine*.

Continuous change of hot and cold airflow provides a pleasant sensation for hair and scalp. The drying power of 2200W and the TurboBoost setting give you the quick powerful drying and styling you need.

ThermoBalance Sensor

- ThermoBalance provides active temperature protection

Beautifully styled hair

- 3 heat and 2 speed settings for full control
- Cool Shot sets your style
- Slim airflow concentrator for a perfect brushing
- 2200W of fast, high performance drying power
- Massaging diffuser to maximize volume & boosts curls
- Turbo boost for extra fast drying

Easy to use

- 1.8m cord for maximum flexibility
- Easy storage hook for convenient storage

Less hair damage

- Ionic conditioning for shiny, frizz-free hair

Highlights

ThermoBalance Sensor

ThermoBalance is an innovative Philips technology that provides smart and superior protection to your hair. The sensor diagnoses continuously the heat of air and constantly adjusts temperature for fast and healthy drying. When ThermoBalance Sensor is activated, the LED is on. You may then feel a pleasant and constant temperature changes, preventing the formation of damaging hotspots on your hair. Your hair and scalp are actively and constantly protected from over heating.

2200W of power



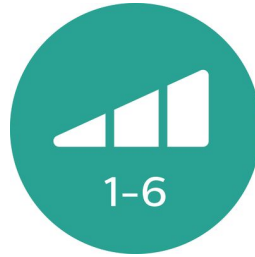
This 2200W professional hairdryer creates a powerful airflow. The resulting combination of power and speed makes drying and styling your hair quicker and easier.

Cool Shot sets your style



A must-have professional setting, the Cool Shot provides a burst of cold air. Use after styling to set and finish your style.

Accurate control



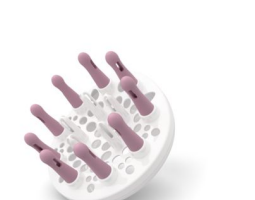
Easily set and control the heat and speed settings to create the perfect style. Choose from 3 heat and 2 speed settings for full control and precise drying and styling

11mm narrow concentrator



The slim styling nozzle concentrate the flow of hair through the 11mm opening for precision styling on specific areas. Great for touch ups or to set your style.

Massaging diffuser



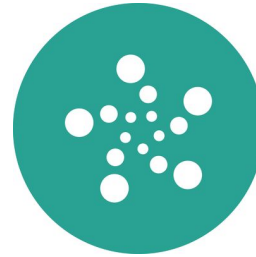
The asymmetric massaging diffuser has a unique asymmetric design that is contoured to the head, making it easier and more intuitive to use. The diffuser spreads the flow of air across the hair, drying hair more healthy, boosting volume and reducing frizz. The rubber pins can be used to massage and stimulate the scalp and improve hair vitality. For best results, hold close to the crown and root area and let the diffuser's massaging pins add bounce and shape curls.

Turbo boost



The turbo boost button increases the airflow, to dry your hair even quicker.

Ionic conditioning



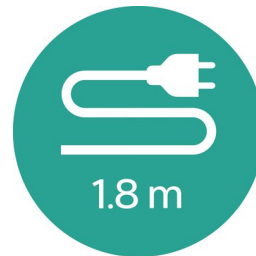
Give your hair an instant care with ionic conditioning. Charged negative ions eliminate static and conditions the hair to intensify the hair's shine and glossiness. The result is smooth and frizz-free hair that shines beautifully.

Easy storage hook



A rubberized hook can be found on the base of the handle. Use to store easily at home or if staying at a hotel.

1.8m cord



1.8m cord.

Specifications

Technical specifications

Voltage: 220-240 V

Frequency: 50-60 Hz

Wattage: 2200 W

Power: 2200 W

Motor: DC Motor

Cord length: 1.8 m

Features

Foldable handle: No

Dual voltage: No

Ceramic coating: No

Ion conditioning

Diffuser

Nozzle / Concentrator

Number of attachments: 2

Hanging loop

Cool Shot

Travel Pouch included: No

Service

2-year guarantee

