

# PHILIPS

7-in-1 Beard & Hair trimmer

Multigroom series  
5000

4 attachments & 3 combs

corded&cordless, washable

high-performance blade

50mins cordless use/1h charge



QG3360/17



## All-in-one beard & hair trimmer

7 in 1 waterproof trimmer for maximum versatility

Groom your beard, hair, mustache and sideburns with this waterproof all-in-one trimmer. 7 different attachments give you the freedom to create different styles on your face and hair, while turbo power trims through thick hair gently.

### Versatile

- Trim your face, neck and sideburns to complete your look
- 18 adjustable lengths (1-18 mm) for an even beard or stubble
- Define sharp lines around your beard or goatee
- Shave small areas on your cheeks and chin with precision
- 12 adjustable lengths (1-12mm) for an even stubble
- Gently get rid of unwanted nose and ear hair
- 18 adjustable lengths (3-20 mm) for an even haircut

### Easy to use

- Skin-friendly, high-performance blades for a gentle trim
- 50 minutes of cordless use on a 1-hour charge
- Higher cutting speed to power through thick hair
- Trimmer can be rinsed clean under the tap
- Easily store, or travel with the trimmer and attachments



[asimpleswitch.com](http://asimpleswitch.com)

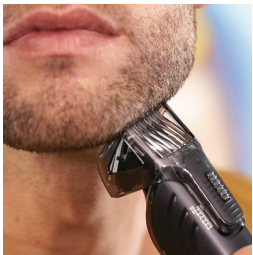
# Highlights

## Full size metal trimmer



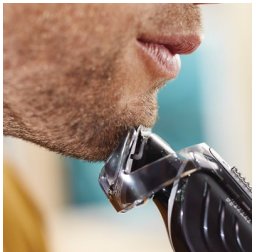
Use the full size metal trimmer without a comb to complete your style and get clean, sharp lines around the edges of your beard.

## Beard & stubble comb



Trim your beard to exactly the length you want, by locking in the setting that suits your desired look. The beard & stubble comb offers 18 length settings from 1mm to 18mm, with precisely 1mm between each setting.

## Dedicated stubble comb



Trim your stubble to exactly the length you want, by locking in the setting that suits your desired look. The dedicated stubble comb offers 12 length settings from 1mm to 12mm, with precisely 1mm between each setting.

## Detail trimmer



Create fine lines, contours and details to define or change your style.

## Detail foil shaver



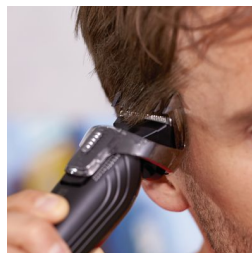
Get rid of unwanted hairs with precision on small areas of your cheeks and chin, for a clean finish.

## Nose trimmer



Remove unwanted nose and ear hair, easily and comfortably.

## Hair comb



Keep your haircut in style, or create a new one, by trimming to different lengths. The hair comb offers 18 length settings from 3mm to 20mm, with precisely 1mm between each setting.

## Skin-friendly blades



Get a gentle trim that is high on performance. Blades are self-sharpening and made of finely ground chromium steel, giving you lasting performance. Their rounded tips and combs ensure smooth, protected contact with your skin.

## 50 min run time, 1-hr charge



Our advanced charging system gives you two convenient options: charge for one hour and you'll get up to 50 minutes of running time, or do a 5-minute quick charge for one full trim.



[asimpleswitch.com](https://www.asimpleswitch.com)

## Philips Green Logo

Philips Green Products can reduce costs, energy consumption and CO2 emissions. How? They offer a significant environmental improvement in one or more of the Philips Green Focal Areas – Energy efficiency, Packaging, Hazardous substances, Weight, Recycling and disposal and Lifetime reliability.

# Specifications

## Create the look you want

**Number of attachments/combs:** 4 attachments & 3 combs

**Styling tools:** Full size metal trimmer, Detail trimmer, Precision shaver, Rotary nose trimmer, 18-setting beard&stubble comb, 12-setting stubble comb, 18-setting hairclipper comb

**Number of length settings:** 18 integrated length settings

**Hairclipping/Facial styling:** Moustache, Long beard, Short beard, Stubble look, Sharp lines, Detailed styling, Goatee

## Trimming performance

**High-performance blade:** For a gentle trim

**Turbo power button:** For increased performance

## Accessories

**Pouch:** Storage pouch

**Oil in pack**

## Ease of use

**Wet & Dry:** Fully washable

**Display:** Charging indicator, Battery full indicator, Battery low indicator

## Design

**Color:** Black with high gloss deco panel

**Handle:** Easy grip

## Power

**Battery type:** NiMH

**Run time:** 50 minutes

**Charging:** 1 hour full charge, 5 min quick charge

**Automatic voltage:** 100-240 V

## Service

**2-year guarantee**

