

PHILIPS

NORELCO

Wet & dry electric
shaver, Series 9000

Shaver 9700

V-Track blade system PRO

8-direction
ContourDetectHeads

SmartClean System Plus

Digital User Interface



S9721/89



Superior closeness in a single pass Even on 3-day beards*

The Shaver 9700 is the ultimate shaving experience. Its unique contour-detect technology, combined with specially upgraded V-track precision blades PRO, creates an unbeatably close and comfortable shave, especially on a 1-3 day beard.

Designed for perfection

- Captures each hair regardless of length
- Shaving heads move in 8 directions for a smoother result

A comfortable shave

- Choose a comfortable dry or refreshing wet shave
- Personalize your shave

Get the most of your shaver

- Keep your shaver like new every day with SmartClean
- Even-up your mustache and sideburns
- Click-on brush to cleanse more thoroughly than by hand

Easy to use

- Advanced interface automatically lights up on contact
- 60 minutes cordless shaving after a one-hour charge
- Convenient case for on-the-go
- Built to last with a full 2 year warranty



asimpleswitch.com

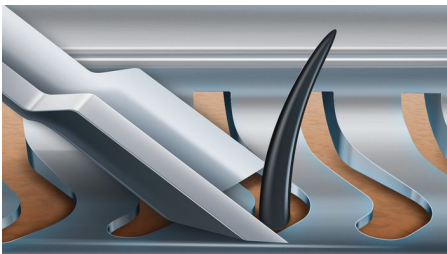
Highlights

Contour Detect Technology



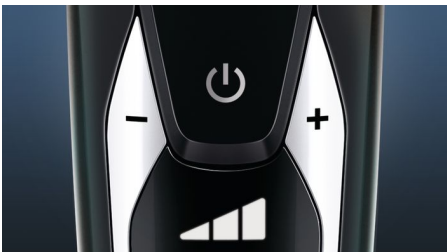
The Philips shaver is an electric shaver that delivers our closest shave ever*. Its Contour Detect technology gently follows your facial contours to capture 20% more hairs* in a single pass.

V-Track Precision Blades PRO



Upgraded V-Track Precision Blades PRO gently captures each hair regardless of its length, from 1 day up to 3 day stubble. Cuts 30% closer* in fewer strokes, leaving your skin smooth and comfortable. The blades also self-sharpen to ensure a premium shave day after day.

Personal Comfort Settings



Choose between normal or sensitive to create a shaving experience that best suits your skin. If you're in a hurry, select the fast setting to save some time.

Digital User Interface



The premium user interface helps you get the best performance out of your shaver by automatically lighting up and displaying: - 3 digit battery indicator - Cleaning indicator - Battery low indicator - Replacement head indicator - Travel lock indicator

Shave Wet or Dry



The wet and dry shaver can be used to your preference. At the sink or in the shower, get a convenient dry shave or pair with your favourite foam or gel for a refreshing wet shave.

SmartClean PLUS



At the touch of a button, SmartClean PLUS cleans, lubricates, dries and charges your shaver, keeping it performing at its best every day.

SmartClick Precision Trimmer



Refine and define your mustache and sideburns with the SmartClick precision trimmer—and complete your look with ease.



iF DESIGN AWARD 2015
Shaver series 9000iF DESIGN AWARD 2015



asimpleswitch.com

Philips Green Logo

Philips Green Products can reduce costs, energy consumption and CO2 emissions. How? They offer a significant environmental improvement in one or more of the Philips Green Focal Areas – Energy efficiency, Packaging, Hazardous substances, Weight, Recycling and disposal and Lifetime reliability.

Specifications

Shaving Performance

Shaving system: V-Track blade system PRO

Contour following: 8-direction

ContourDetectHeads

SkinComfort: AquaTec Wet & Dry

Personal Comfort Settings: Sensitive-Normal-Fast settings

Accessories

SmartClean PLUS: Cleans, Dries, Charges, Lubricates, Cleaning cartridge (included)

SmartClick: Precision trimmer, Deep facial cleansing brush

Pouch: Travel pouch

Ease of use

Display: % Battery Level Indicator, Battery low indicator, Cleaning indicator, Replace shaving heads indicator, Travel lock indicator

Cleaning: Fully washable

Design

Color: Black HG

Handle: Ergonomic grip & handling

Power

Battery Type: Lithium-ion

Run time: 60 min / 20 shaves

Charging: 1 hour full charge, Quick charge for 1 shave

Automatic voltage: 100-240 V

Stand-by power: 0.1 W

Max power consumption: 9 W

Service

Replacement head: Replace every yr with SH90
2-year warranty

Software

Software update: Philips offers relevant software updates for a period of 2 years after the date of purchase

