



Philips SensoTouch  
wet and dry electric razor  
with Precision trimmer

DualPrecision heads

2-way flexing heads

SensoTouch



1150X

# Philips SensoTouch - Soft touch, smooth shave

The new Philips SensoTouch 1150x electric shaver gives a soft touch for a smooth shave. The GyroFlex 2D system easily adjusts to the curves of your face and shaves even the shortest stubble with its DualPrecision heads.

#### **A shaver that adjusts to the curves of your face**

- GyroFlex 2D system adjusts easily to the curve

#### **Close and comfortable shave**

- DualPrecision shaves even the shortest stubble
- SensoTouch Shavers with Super Lift&Cut Action

#### **An electric shaver that takes care of your skin**

- Aquatec seal for comfortable dry shaves and refreshing wet shaves
- Smooth, low-friction SkinGlide to minimise irritation

#### **Shave with perfect control and precision**

- Precision trimmer for perfect moustache, sideburn trimming



**PHILIPS**

**NORELCO**

sense and simplicity

## Highlights

### GyroFlex 2D



GyroFlex 2D contour-following system adjusts easily to the curves of your face, minimising pressure and irritation for a close shave.

### DualPrecision



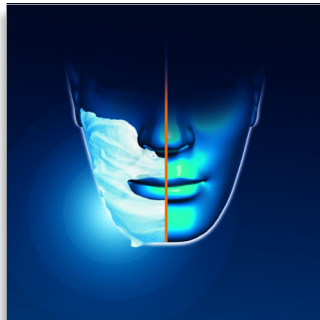
DualPrecision shaving heads have slots to shave the normal hairs and holes to shave even the shortest stubble.

### Super Lift & Cut Action



The dual-blade system built into our electric shaver lifts hairs to cut comfortably below skin level for a closer shave.

### Aquatec



The Aquatec wet and dry seal lets you choose how you prefer to shave. You can get a comfortable dry shave or a refreshing wet shave using a shaving gel or foam for extra skin comfort.

### SkinGlide



The low-friction SkinGlide shaving surface slides smoothly along your skin for a close, easy shave.

### Precision trimmer



Precision trimmer for perfect moustache and sideburn trimming.

## Specifications

### Shaving Performance

- Contour-following: GyroFlex 2D contour following
- Shaving System: DualPrecision System, Patented Super Lift & Cut
- Styling: Precision trimmer
- Skin Comfort: SkinGlide

### Ease of use

- Charging: 1 hour, Rechargeable, Cordless, Quick charge
- Shaving time: Up to 14 days
- Display: Two level battery indicator, Battery low indicator, Charge indicator, Travel lock
- Wet and Dry: Wet and dry use
- Cleaning: Washable

### Design

- Handle: Slim handle, Anti-slip grip
- Finishing: Seamless foil, LED Display
- Colour: Blue

### Accessories

- Stand: Charging stand
- Maintenance: Cleaning brush, Protection cap

### Power

- Battery Type: Li-Ion
- Run time: 40 min
- Stand-by power: 0.15 W
- Max power consumption: 5.4 W

### Service

- 2-year guarantee
- Replacement head: Replace every yr with RQ11

