



Philips arcitec  
Electric shaver with Flex  
and Pivot Action



RQ1061

## The best shaver from the world's no. 1

Perfectly close, even on the neck

For men who only want the very best, arcitec combines Flex and Pivot Action with the Triple-track shaving heads for a perfectly close shave, even on the neck.

**Perfectly close, even on the neck**

- Flex and Pivot Action follows every curve

**A fast and close shave**

- Triple-Track shaving heads with 50% more shaving surface

**Comfortably close**

- Super Lift & Cut technology

**Shaves even the shortest stubble**

- Precision Cutting System

**Perfect moustache and sideburn trimming**

- Precision tube trimmer



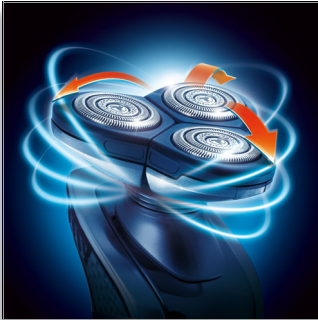
asimpleswitch.com

**PHILIPS**

sense and simplicity

# Highlights

## Flex and Pivot Action



Three independently flexing heads in a shaving unit that swivels with full range of motion. This unique combination ensures optimum skin contact in curved areas to catch even the most problematic neck hair.

## Triple-Track shaving heads



The three shaving tracks of the Triple-Track shaving heads offer 50% more shaving surface than standard, single track rotary shaving heads.

## Super Lift & Cut technology



The dual blade system lifts hairs to cut comfortably below skin level.

## Precision Cutting System



Ultra thin heads with slots to shave the long hairs and holes to shave even the shortest stubble.

## Precision tube trimmer



Patented tube trimmer technology for great precision and manoeuvrability. Perfect for contouring and trimming moustache and sideburns.

## Washable shaver



The waterproof shaver can be easily rinsed under the tap.

# Specifications

## Shaving Performance

- Shaving System: Triple-Track shaving heads, Precision Cutting System, Super Lift & Cut technology
- Contour-following: Flex and Pivot Action, Pivoting shaving unit
- Styling: Skin-friendly precision trimmer

## Ease of use

- Display: Battery level indicator, Charge indicator, Replace shaving heads indicator, Travel lock
- Charging: Rechargeable, Quick charge
- Charging: 1 hour
- Shaving time: 21 days
- Cleaning: Washable, Cleaning indicator

## Design

- Finishing: Mirror coated display

## Accessories

- Stand: Charging stand
- Maintenance: Cleaning brush, Protection cap



Issue date 2012-02-25

Version: 10.0.1

12 NC: 0000 000 00000

© 2012 Koninklijke Philips Electronics N.V.  
All Rights reserved.

Specifications are subject to change without notice.  
Trademarks are the property of Koninklijke Philips Electronics N.V. or their respective owners.

[www.philips.com](http://www.philips.com)